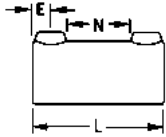


### Easyfit™ STRUCTURAL PIPE FITTINGS FOR 1"-1-1/2" STEEL PIPE

#### IFA00G

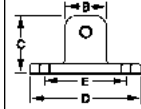
#### STRAIGHT SLEEVE



PART NO	E	L	N
IFA00G-25	0.47	3.82	1.86
IFA00G-32	0.67	4.96	2.20
IFA00G-40	0.67	5.20	2.44

#### IFA10G

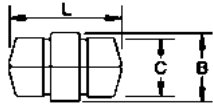
#### SWIVEL BASE



PART NO	A	B	C	D	E
IFA10G	1.96	1.57	2.17	4.53	3.35

#### IFA01G

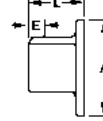
#### EXPANDING CONNECTOR



PART NO	B	C	L
IFA01G-25	1.32	1.02	2.99
IFA015-32	1.65	1.38	2.99
IFA01G-40	1.89	1.61	2.99

#### IFA11G

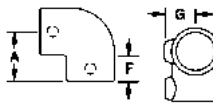
#### BASE FLANGE



PART NO	A	E	L
IFA11G-25	3.46	0.47	1.89
IFA11G-32	4.02	0.67	2.13
IFA11G-40	4.49	0.67	2.36

#### IFA02G

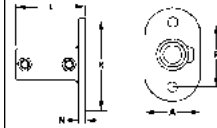
#### 90 DEGREE ELBOW



PART NO	A	F	G
IFA02G-25	1.89	0.98	1.10
IFA02G-32	2.48	1.38	1.30
IFA02G-40	2.60	1.38	1.42

#### IFA12G

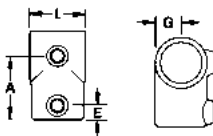
#### RAILING BASE FLANGE



PART NO	A	K	L	N	P
IFA12G-25	2.99	5.04	3.82	0.39	3.50
IFA12G-32	3.15	5.51	4.96	0.47	4.02
IFA12G-40	3.50	5.98	5.20	0.47	4.49

#### IFA03G

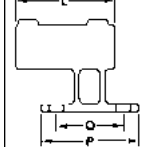
#### SHORT TEE



PART NO	A	E	G	L
IFA03G-25	1.89	0.47	1.10	1.89
IFA03G-32	2.48	0.67	1.30	2.24
IFA03G-40	2.68	0.67	1.42	2.48

#### IFA13G

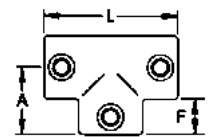
#### VERTICAL BASE FLANGE



PART NO	L	P	Q	R
IFA13G-25	4.13	3.74	2.56	1.89
IFA13G-32	4.53	4.13	2.95	2.13
IFA13G-40	4.92	4.72	3.54	2.36

#### IFA04G

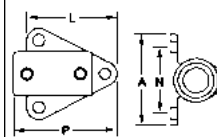
#### LONG TEE



PART NO	A	F	L
IFA04G-25	1.89	0.98	3.82
IFA04G-32	2.48	1.38	4.96
IFA04G-40	2.68	1.38	5.20

#### IFA15G

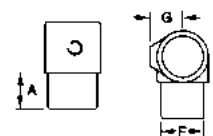
#### WALL FLANGE



PART NO	A	L	N	P
IFA15G-25	3.66	3.54	2.72	4.01
IFA15G-32	4.02	3.90	3.07	4.57
IFA15G-40	4.25	4.13	3.31	4.80

#### IFA06G

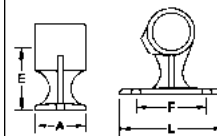
#### INTERNAL SWIVEL TEE



PART NO	A	F	G
IFA06G-25	0.98	1.34	1.10
IFA06G-32	1.38	1.69	1.30
IFA06G-40	1.38	1.93	1.42

#### IFA16G

#### RAIL BRACKET

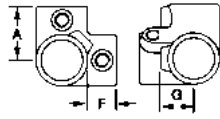


PART NO	A	E	F	L
IFA16G-25	1.77	2.28	2.56	3.74
IFA16G-32	1.89	2.44	3.35	4.53
IFA16G-40	1.97	2.68	3.35	4.53

# Easyfit™ STRUCTURAL PIPE FITTINGS FOR 1"-1-1/2" STEEL PIPE

## IFA20G

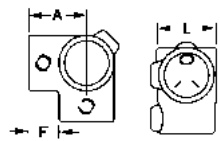
### 3-WAY BLIND CORNER



PART NO	A	F	G
IFA20G-25	1.89	0.98	1.10
IFA20G-32	2.48	1.38	1.32
IFA20G-40	2.60	1.38	1.42

## IFA21G

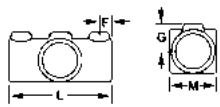
### 3-WAY OPEN CORNER



PART NO	A	F	L
IFA21G-25	1.89	0.98	1.89
IFA21G-32	2.48	1.38	2.24
IFA21G-40	2.60	1.38	2.48

## IFA22G

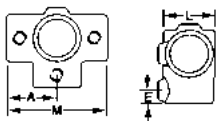
### SHORT CROSS



PART NO	E	G	L	M
IFA22G-25	0.47	1.10	3.82	1.89
IFA22G-32	0.67	1.30	4.96	2.24
IFA22G-40	0.67	1.42	5.20	2.48

## IFA23G

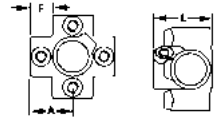
### SIDE OUTLET TEE



PART NO	A	E	L	M
IFA23G-25	1.89	0.47	1.89	3.78
IFA23G-32	2.48	0.67	2.24	4.96
IFA23G-40	2.60	0.67	2.48	5.20

## IFA24G

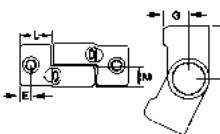
### 4-WAY WITH CENTER TUBE



PART NO	A	F	L
IFA24G-25	1.89	0.98	2.56
IFA24G-32	2.48	1.38	3.11
IFA24G-40	2.60	1.38	3.35

## IFA25G

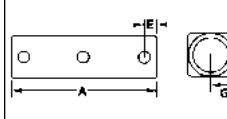
### SHORT TEE SWIVEL



PART NO	A	E	G	L	M
IFA25G-25	2.32	0.47	1.10	1.38	0.94
IFA25G-32	2.91	0.67	1.30	1.77	1.12
IFA25G-40	3.23	0.67	1.42	1.97	1.24

## IFA27G

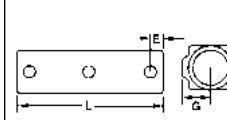
### 0-45° ADJUSTABLE ANGLE TEE



PART NO	A	E	G
IFA27G-25	5.75	0.47	1.10
IFA27G-32	7.01	0.67	1.30
IFA27G-40	8.58	0.67	1.42

## IFA28G

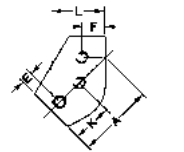
### 30-45° ADJUSTABLE 2 SOCKET CROSS



PART NO	E	G	L
IFA28G-25	0.47	1.10	5.75
IFA28G-32	0.67	1.30	7.01
IFA28G-40	0.67	1.442	8.58

## IFA29G

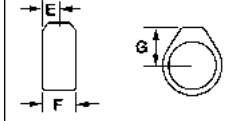
### VARIABLE ANGLE TEE



PART NO	A	E	F	K	L
IFA29G-25	2.95	0.47	0.79	1.57	2.13
IFA29G-32	3.74	0.67	0.98	1.97	2.48
IFA29G-40	4.13	0.67	0.98	2.20	2.68

## IFA30G

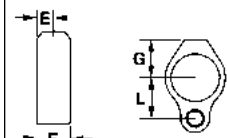
### COLLAR



PART NO	E	F	G
IFA30G-25	0.49	0.98	1.10
IFA30G-32	0.53	1.06	1.30
IFA30G-40	0.53	1.06	1.42

## IFA31G

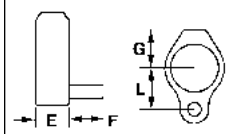
### GATE EYE



PART NO	E	F	G	L
IFA31G-25	0.49	0.98	1.10	1.18
IFA31G-32	0.53	1.06	1.30	1.34
IFA31G-40	0.53	1.06	1.42	1.46

## IFA32G

### GATE HINGE

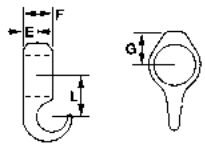


PART NO	E	F	L	G
IFA32G-25	0.49	0.98	1.18	1.10
IFA32G-32	0.53	1.06	1.34	1.30
IFA32G-40	0.53	1.06	1.46	1.42

**Easyfit™ STRUCTURAL PIPE FITTINGS FOR 1"-1-1/2" STEEL PIPE**

**IFA33G**

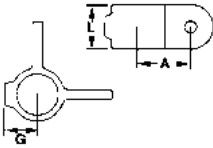
**HOOK**



PART NO	E	F	G	L
IFA33G-25	0.49	0.98	1.10	1.42
IFA33G-32	0.53	1.06	1.30	1.57
IFA33G-40	0.53	1.06	1.42	1.69

**IFA38G**

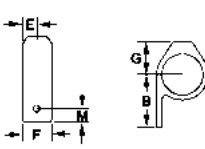
**90° CORNER FEMALE SWIVEL**



PART NO	A	G	L
IFA38G-25	1.71	1.10	1.50
IFA38G-32	1.89	1.30	1.89
IFA38G-40	2.01	1.42	1.89

**IFA34G**

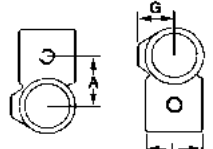
**FIXING PAD**



PART NO	B	E	F	G	M
IFA34G-25	1.77	0.49	0.98	1.10	0.49
IFA34G-32	2.13	0.53	1.06	1.30	0.53
IFA34G-40	2.36	0.53	1.06	1.42	0.53

**IFA40G**

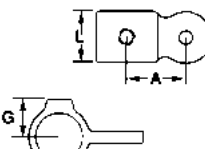
**CROSS OVER**



PART NO	A	G	L
IFA40G-25	1.57	1.10	1.77
IFA40G-32	1.93	1.30	2.13
IFA40G-40	2.17	1.42	2.36

**IFA35G**

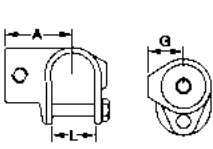
**FIXING PAD**



PART NO	A	G	L
IFA35G-25	1.71	1.10	1.50
IFA35G-32	1.89	1.30	1.89
IFA35G-40	2.01	1.42	1.89

**IFA41G**

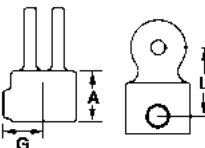
**CLAMP ON TEE**



PART NO	A	G	L
IFA41G-25	1.89	1.10	1.32
IFA41G-32	2.48	1.30	1.67
IFA41G-40	2.68	1.42	1.91

**IFA36G**

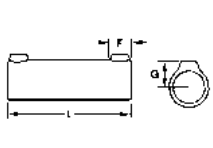
**FEMALE SWIVEL**



PART NO	A	G	L
IFA36G-25	1.38	1.10	2.36
IFA36G-32	1.77	1.30	2.76
IFA36G-40	1.97	1.42	2.95

**IFA90G**

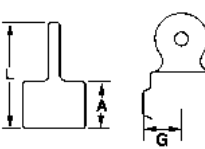
**STRAIGHT SLEEVE**



PART NO	F	G	L
IFA90G-25	0.98	1.10	5.51
IFA90G-32	1.38	1.30	7.28
IFA90G-40	1.38	1.42	7.87

**IFA36GM**

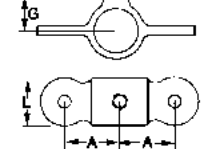
**MALE SWIVEL**



PART NO	A	G	L
IFA36G-25M	1.38	1.10	2.36
IFA36G-32M	1.77	1.30	2.76
IFA36G-40M	1.97	1.42	2.95

**IFA37G**

**DOUBLE MALE SWIVEL**



PART NO	A	G	L
IFA37G-25	1.71	1.10	1.50
IFA37G-32	1.89	1.30	1.89
IFA37G-40	2.01	1.42	1.89

**Structural pipe fittings are ideal for use where threading or welding isn't practical. Racks, fences and guardrails are rapidly erected. Contact us for a brochure showing many other uses for them.**