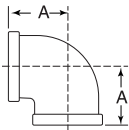




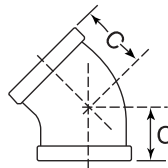
MALLEABLE IRON CLASS 150 (STANDARD)

90° Elbow
Figure 1101



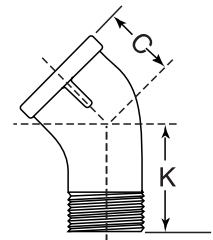
Size (NPS)	A (in)	Weight (lbs)	
		black	galv.
1/8	11/16	.06	.07
1/4	13/16	.11	.12
3/8	15/16	.17	.17
1/2	1-1/8	.26	.27
3/4	1-5/16	.38	.43
1	1-1/2	.63	.65
1-1/4	1-3/4	.96	.94
1-1/2	1-15/16	1.30	1.34
2	2-1/4	2.06	2.01
2-1/2	2-11/16	3.54	3.64
3	3-1/16	5.20	5.35
3-1/2	3-7/16	7.10	7.19
4	3-13/16	8.95	9.37
5	4-1/2	13.90	14.50
6	5-1/8	23.00	23.50

45° Elbow
Figure 1102

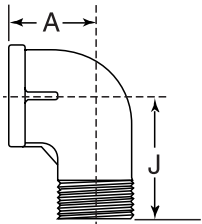


Size (NPS)	C (in)	Weight (lbs)	
		black	galv.
1/8	11/16	.06	.08
1/4	3/4	.11	.11
3/8	13/16	.16	.18
1/2	7/8	.21	.24
3/4	1	.37	.39
1	1-1/8	.54	.57
1-1/4	1-5/16	.86	.87
1-1/2	1-7/16	1.13	1.17
2	1-11/16	1.71	1.85
2-1/2	1-15/16	2.78	2.90
3	2-3/16	4.48	4.58
4	2-5/8	7.20	7.35
5	3-1/16	11.46	11.75
6	3-7/16	17.24	17.65

45° Street Elbow
Figure 1104



90° Street Elbow
Straight: Figure 1103
Reducing: Figure 1103R



First size denotes female end

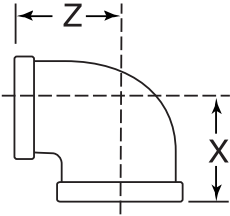
Size (NPS)	A (in)	J (in)	Weight (lbs)	
			black	galv.
1/8	11/16	1	.06	.06
1/4	13/16	1-3/16	.11	.12
3/8	15/16	1-7/16	.17	.18
1/2	1-1/8	1-5/8	.24	.26
3/4	1-5/16	1-7/8	.41	.42
1	1-1/2	2-1/8	.62	.64
1-1/4	1-3/4	2-7/16	1.10	1.14
1-1/2	1-15/16	2-11/16	1.44	1.55
2	2-1/4	3-1/4	2.85	2.73
2-1/2	2-11/16	3-7/8	4.00	4.05
3	3-1/16	4-1/2	6.06	6.26
4	3-13/16	5-11/16	9.87	11.07
1/2 x 3/8	1-1/16	1-9/16	.23	.25
3/4 x 1/2	1-3/16	1-3/4	.32	.36
1 x 3/4	1-3/8	2-1/16	.54	.56
1-1/4 x 1	1-9/16	2-5/16	.86	.89
1-1/4 x 3/4	1-7/16	2-1/4	.75	.77
1-1/2 x 1-1/4	1-13/16	2-9/16	1.18	1.31
1-1/2 x 1	1-5/8	2-1/2	1.08	1.11
2 x 1-1/2	2	2-15/16	1.85	1.88

Size (NPS)	C (in)	K (in)	Weight (lbs)	
			black	galv.
1/8	11/16	7/8	.06	.07
1/4	3/4	15/16	.10	.11
3/8	13/16	1	.14	.14
1/2	7/8	1-1/8	.20	.21
3/4	1	1-5/16	.33	.34
1	1-1/8	1-7/16	.52	.53
1-1/4	1-5/16	1-11/16	.84	.87
1-1/2	1-7/16	1-7/8	1.21	1.27
2	1-11/16	2-1/4	1.94	1.95



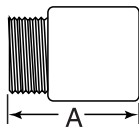
MALLEABLE IRON CLASS 150 (STANDARD)

Reducing Elbow
Figure 1101R



Size (NPS)		X (in)	Z (in)	Weight (lbs)	
				black	galvanized
1/4	1/8	3/4	3/4	0.10	0.10
3/8	1/8	13/16	7/8	0.12	0.13
	1/4	7/8	15/16	0.14	0.15
1/2	1/4	1	1	0.19	0.20
	3/8	1-1/16	1-1/16	0.21	0.22
3/4	1/4	1-1/8	1-1/8	0.26	0.28
	3/8	1-1/8	1-1/8	0.29	0.30
1	1/2	1-3/16	1-1/4	0.39	0.40
	3/8	1-3/16	1-1/4	0.41	0.42
1-1/4	1/2	1-1/4	1-3/8	0.46	0.47
	3/4	1-3/8	1-7/16	0.55	0.58
	1	1-3/8	1-9/16	0.62	0.64
1-1/2	3/4	1-7/16	1-5/8	0.71	0.73
	1	1-9/16	1-11/16	0.86	0.9
	3/4	1-1/2	1-3/4	0.83	0.85
2	1	1-5/8	1-13/16	1.00	1.05
	1-1/4	1-13/16	1-7/8	1.17	1.18
	3/4	1-5/8	2	1.3	1.32
2-1/2	1	1-3/4	2	1.35	1.45
	1-1/4	1-7/8	2-1/8	1.53	1.55
	1-1/2	2	2-1/8	1.75	1.78
3	2-1/2	2-3/16	2-1/2	2.32	2.55
	2	2-7/16	2-5/8	3.00	3.00
4	3	2-9/16	2-15/16	3.75	3.91
	2-1/2	2-13/16	3	4.00	4.05
4	3	3-5/16	3-5/8	7.87	7.95

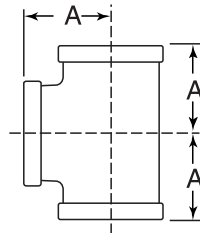
Extension Piece
Figure 1137



Size (NPS)	A (in)	Weight (lbs)	
		black	galv.
3/8	1-5/16	.10*	.10*
1/2	1-5/8	.14	.16
3/4	1-15/16	.26	.26
1	2-1/16	.42	.41

*POA

Straight Tee
Figure 1105

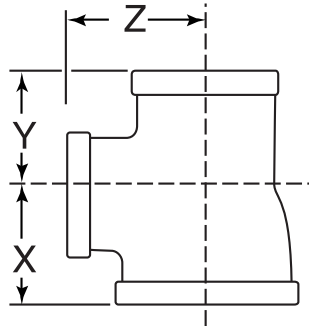


Size (NPS)	A (in)	Weight (lbs)	
		black	galv.
1/8	11/16	.09	.10
1/4	13/16	.15	.16
3/8	15/16	.23	.24
1/2	1-1/8	.36	.37
3/4	1-5/16	.56	.58
1	1-1/2	.90	.92
1-1/4	1-3/4	1.31	1.35
1-1/2	1-15/16	1.73	1.79
2	2-1/4	2.52	2.80
2-1/2	2-11/16	4.90	5.02
3	3-1/16	7.12	7.25
3-1/2	3-7/16	9.00	9.40
4	3-13/16	11.31	12.30
5	4-1/2	19.42	19.51
6	5-1/8	25.50	29.9



MALLEABLE IRON CLASS 150 (STANDARD)

Reducing Tee
Figure 1105R



Size (NPS)	X (in)	Y (in)	Z (in)	Weight (lbs)		
				black	galv.	
1/8	1/8	1/4	3/4	.12	.14	
1/4	1/4	1/8	3/4	.13	.14	
		3/8	5/16	.19	.20	
		1/4	7/8	.19	.20	
3/8	1/4	7/8	13/16	.21	.22	
		3/8	15/16	.21	.22	
		1/2	1-1/8	.29	.29	
	3/8	1/4	7/8	.21	.22	
		1/2	1-1/16	.26	.29	
		1/2	1-1/8	.30	.31	
1/2	3/8	1-1/16	1	.28	.29	
		1/4	1	.27	.29	
		3/8	1-1/16	.30	.32	
	1/2	3/4	1-1/4	.43	.45	
		1	1-3/8	.55	.57	
		1	1-3/8	.45	.46	
3/4	3/8	1-1/8	1-1/8	.36	—	
		3/4	1-5/16	.46	.48	
		1/2	1-3/16	.43	.47	
	1/2	3/4	1-5/16	.51	.51	
		1/4	1-1/16	.38	.40	
		3/8	1-1/8	.42	.46	
	3/4	1/2	1-3/16	.46	.49	
		1	1-7/16	.62	.66	
		1-1/4	1-5/8	.90	.93	
		1/4	1	.69	.71	
		1/2	1/2	1-1/4	.55	.55
			3/4	1-3/8	.56	.62
1	1-1/2		.76	.73		
1	3/4	1/2	1-1/4	.59	.62	
		3/4	1-3/8	.73	.75	
		1	1-1/2	.78	.81	
	1	1/4	1-1/8	.55	.55	
		3/8	1-3/16	.60	.63	
		1/2	1-1/4	.70	.74	
		3/4	1-3/8	.82	.84	
		1-1/4	1-11/16	.92	.97	
		1-1/2	1-13/16	1.19	1.24	
	2	2	1.63	1.63		

Size (NPS)	X (in)	Y (in)	Z (in)	Weight (lbs)	
				black	galv.
1-1/4	1/2	1	1-9/16	.87	.94
		1-1/4	1-3/4	1.04	1.07
		3/4	1-7/16	.86	.86
	3/4	1	1-9/16	.96	.88
		1-1/4	1-3/4	1.09	1.10
		1/2	1-3/8	.76	.79
	1	3/4	1-7/16	.87	.92
		1	1-9/16	1.11	1.13
		1-1/4	1-3/4	1.13	1.19
		3/8	1-1/4	.86	.89
		1/2	1-3/8	.98	.98
		3/4	1-7/16	1.06	1.10
1-1/4	1	1-9/16	1.18	1.22	
	1-1/2	1-7/8	1.45	1.40	
	2	2-1/8	1.70	1.82	
	1/2	1-1/2	1.35	1.42	
	3/4	1-1/2	1-15/16	1.41	1.56
		3/4	1-1/2	1.00	1.03
1-1/2		1-15/16	1.50	1.54	
1	1-1/4	1-13/16	1.30	1.44	
	1	1-5/8	1.15	1.18	
	1/2	1-7/16	1.03	1.10	
	3/4	1-1/2	1.08	1.10	
	1-1/4	1	1.26	1.27	
	1-1/4	1-13/16	1.52	1.42	
1-1/2	1-1/2	1-15/16	1.50	1.55	
	1/2	1-7/16	1.19	1.25	
	3/4	1-1/2	1.29	1.40	
	1	1-5/8	1.44	1.49	
	1-1/4	1-13/16	1.45	1.47	
	2	2-3/16	2	1.86	2.01
2	1/2	2	2.14	2.25	
	3/4	2	2.14	2.00	1.97
	1	2	2-1/4	2.14	2.28
	1-1/4	1-1/4	1.72	1.79	
	1-1/2	2	1.85	2.00	
	2	2-1/4	2.20	2.25	

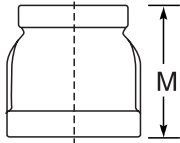
Size (NPS)	X (in)	Y (in)	Z (in)	Weight (lbs)		
				black	galv.	
2	1-1/2	1	1-3/4	1.58	1.61	
		1-1/4	1-7/8	1.76	1.83	
		1-1/2	2	1.95	1.95	
	2	2	2-1/4	2.24	2.39	
		1/2	1-1/2	1.65	1.70	
		3/4	1-5/8	1.87	1.90	
2-1/2	2	1	1-3/4	1.79	2.00	
		1-1/4	1-7/8	2.35	2.55	
		1-1/2	2	2.55	2.65	
	1-1/2	2-1/2	2-5/8	3.50	3.59	
		2	2-3/8	3.43	3.51	
		2-1/2	2-11/16	3.80	3.80	
2-1/2	2	2	2-3/8	3.28	3.32	
		2-1/2	2-11/16	3.65	4.10	
		3/4	1-3/4	2.82	2.80	
	1-1/2	1	1-7/8	2.85	3.00	
		1-1/4	2-1/16	3.34	3.47	
		1-1/2	2-3/16	3.46	3.57	
3	2	2	2-3/8	3.65	3.75	
		3	3	5.82	6.00	
		2-1/2	2-13/16	5.82	6.00	
	3	2	2	2-1/2	4.10	4.30
			3	3-1/8	6.07	6.53
			2	2-1/2	4.80	4.85
2-1/2		2-1/2	2-13/16	5.80	5.91	
		3/4	1-7/8	4.02	4.22	
		1	2	4.15	4.36	
3	3	1-1/4	2-3/16	4.68	4.67	
		1-1/2	2-5/16	5.11	5.26	
		2	2-1/2	5.79	5.81	
	2-1/2	2-1/2	2-13/16	6.09	6.22	
		3	4	11.80	11.00	
		4	4	11.80	11.00	
4	3	2	2-3/4	8.39	8.80	
		2-1/2	3-1/16	9.80	9.25	
		3	3-5/16	11.02	11.30	
	4	2	2-3/4	8.39	8.80	
		2-1/2	3-1/16	9.80	9.25	
		3	3-5/16	11.02	11.30	



MALLEABLE IRON FITTING (CLASS 150 STANDARD)

Couplings
Figure 1125

Size (NPS)		M (in)	Weight (lbs)	
			black	galv.
1/4	1/8	1	.07	.08
3/8	1/8	1-1/8	.11	.13
	1/4		.11	.12
1/2	1/8	1-1/4	.14	.15
	1/4		.15	.16
	3/8		.16	.18
3/4	1/8	1-7/16	.24	.25
	1/4		.22	.23
	3/8		.25	.26
	1/2		.26	.28
1	1/4	1-11/16	.35	.37
	3/8		.35	.38
	1/2		.39	.41
	3/4		.42	.44
1-1/4	1/2	2-1/16	.60	.63
	3/4		.64	.65
1-1/2	1	2-5/16	.68	.70
	1/2		.77	.80
	3/4		.88	.90
	1		.90	.91
2	1/2	2-13/16	1.15	1.20
	3/4		1.34	1.34
	1		1.40	1.40
	1-1/4		1.53	1.53
	1-1/2		1.55	1.57
2-1/2	1	3-1/4	2.12	2.20
	1-1/4		2.09	2.14
	1-1/2		2.09	2.11
	2		2.50	2.56
3	1	3-11/16	3.16	3.24
	1-1/4		3.22	3.05
	1-1/2		3.30	3.47
	2		3.23	3.38
	2-1/2		3.31	3.40
3-1/2	2	4	4.32	4.40
	2-1/2		4.72	4.80
	3		4.99	5.15
4	1-1/2	4-3/8	4.90	5.00
	2		5.10	5.00
	2-1/2		5.93	5.95
	3		6.55	6.62
5	4	4-9/16	9.57	9.20
	6	4-13/16	10.30	10.70



Return Bends
Open Pattern,
R.H. Fig: 1119



Size (NPS)	Center to Center (in)	Weight (lbs)	
		black	galv.
1/2	1-1/2	.36	—
3/4	2	.64	—
1	2-1/2	1.10	1.15
1-1/4	3	1.77	—
1-1/2	3-1/2	2.55	—
2	4	4.00	4.25

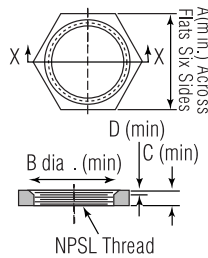
Cap
Figure 1124



Size (NPS)	Weight (lbs)	
	black	galv.
•1/8	.03	.04
•1/4	.06	.06
•3/8	.09	.10
1/2	.12	.12
3/4	.22	.20
1	.38	.38
1-1/4	.58	.61
1-1/2	.73	.75
2	1.13	1.20
2-1/2	1.75	1.80
3	2.59	2.75
3-1/2	3.16	3.24
4	4.54	4.61
5	6.44	6.89
6	10.00	9.98

•1/8, 1/4, 3/8 Made in Steel

Hex Locknut
Figure 1134



Size (NPS)	Minimum Dimensions				Weight (lbs)	
	A (in)	B (in)	C (in)	D (in)	black	galv.
•1/8	.690	.500	.190	.040	.04	.04
•1/4	.840	.660	.250	.060	.02	.03
3/8	1.000	.770	.280	.060	.04	.04
1/2	1.180	.970	.310	.060	.06	.06
3/4	1.430	1.230	.340	.060	.12	.13
1	1.750	1.500	.380	.060	.14	.16
1-1/4	2.100	1.860	.420	.060	.21	.19
1-1/2	2.350	2.120	.470	.060	.24	.25
2	2.880	2.630	.530	.090	.40	.47

•1/8 & 1/4 Made in Steel

Lakeside carries all malleable fittings in both black and galvanized finish.

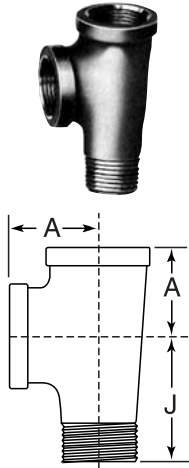
For nominal sizes larger than 2" see cast iron standard.



ANVIL™
INTERNATIONAL, INC.

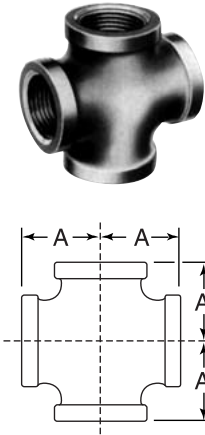
MALLEABLE IRON CLASS 150 (STANDARD)

Street or Service Tee
Straight: Figure 1106
Reducing: Figure 1106R



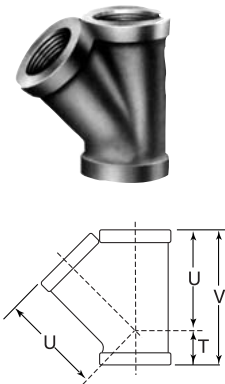
Size (NPS)	A (in)	J (in)	Weight (lbs)		
			black	galv.	
1/4	1-3/16	1-3/16	.15	.16	
3/8	1-5/16	1-7/16	.24	.26	
1/2	1-1/8	1-5/8	.34	.34	
3/4	1-5/16	1-7/8	.54	.63	
1	1-1/2	2-1/8	.96	.99	
1-1/4	1-3/4	2-7/16	1.38	1.49	
1-1/2	1-15/16	2-11/16	1.93	2.00	
2	2-1/4	3-1/4	3.16	3.20	
Size (NPS) female run x male run x outlet	run		outlet		Wt. (lbs) black
	A (in)	J (in)	A (in)		
1-1/4 1 x 1-1/4	1-3/4	2-5/16	1-3/4		1.32

Cross
Fig: 1107



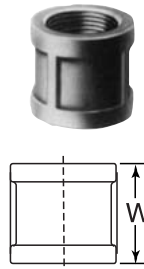
Size (NPS)	A (in)	Weight (lbs)	
		black	galv.
1/8	11/16	.12	.13
1/4	13/16	.18	.19
3/8	15/16	.27	.27
1/2	1-1/8	.41	.43
3/4	1-5/16	.69	.68
1	1-1/2	1.12	1.14
1-1/4	1-3/4	1.44	1.56
1-1/2	1-15/16	1.98	2.05
2	2-1/4	3.30	3.29
2-1/2	2-11/16	5.90	5.75
3	3-1/16	7.93	8.10
4	3-13/16	13.50	13.91

45° Y-branch
or Lateral
Figure 1108



Size (NPS)	T (in)	U (in)	V (in)	Weight (lbs)	
				black	galv.
3/8	1/2	1-7/16	1-15/16	.27	.29
1/2	5/8	1-11/16	2-5/16	.37	.39
3/4	3/4	2-1/16	2-13/16	.62	.65
1	7/8	2-7/16	3-5/16	.86	.93
1-1/4	1	2-15/16	3-15/16	1.63	1.62
1-1/2	1-1/8	3-1/4	4-3/8	2.00	2.06
2	1-1/4	3-15/16	5-3/16	3.05	3.26
2-1/2	1-1/2	4-3/4	6-1/4	5.86	6.06
3	1-11/16	5-9/16	7-1/4	9.30	9.40
4	2	7	9	15.70	15.85

Coupling
Right Hand
Figure 1121



Size (NPS)	W (in)	Weight (lbs)	
		black	galv.
1/8	15/16	.06	.06
1/4	1-1/16	.09	.09
3/8	1-3/16	.13	.13
1/2	1-5/16	.20	.21
3/4	1-1/2	.29	.31
1	1-11/16	.48	.49
1-1/4	1-15/16	.74	.76
1-1/2	2-1/8	1.00	1.00
2	2-1/2	1.45	1.55
2-1/2	2-7/8	2.40	2.45
3	3-3/16	3.30	3.39
4	3-11/16	5.65	5.73

ALL ELBOWS & TEES 3/8" AND LARGER ARE 100% GAS TESTED AT A MINIMUM OF 100 PSI.

Floor Flange
Figure 1190



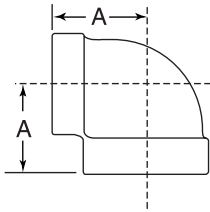
Size (NPS)	Dia. of Flange (in)	Diameter of Bolt Circle (in)	No. of Holes	Dia. of Holes (in)	Weight (lbs)	
					black	galv.
1/4◇	2-3/16	1-7/8	4	1/4	.27	.43
3/8◇	3	2	4	1/4	.33	.48
1/2	3-1/2	2-1/2	4	1/4	.56	.60
3/4	3-1/2	2-1/2	4	1/4	.60	.58
1	4	3	4	1/4	.85	.88
1-1/4	4	3	4	1/4	.90	.90
1-1/2	4-1/2	3-1/2	4	5/16	1.20	1.25
2	5-1/2	4-1/4	4	5/16	2.03	2.05

◇Cast Iron



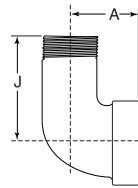
MALLEABLE IRON FITTINGS CLASS 300 (XS/XH)

90° Elbow Straight
Figure 1161



Size (NPS)	A (in)	Weight (lbs)	
		black	galv.
1/4	15/16	.20	.20
3/8	1-1/16	.29	.32
1/2	1-1/4	.47	.48
3/4	1-7/16	.66	.68
1	1-5/8	1.16	1.19
1-1/4	1-15/16	1.88	1.93
1-1/2	2-1/8	2.46	2.57
2	2-1/2	4.17	4.27
2-1/2	2-15/16	5.30	5.93
3	3-3/8	9.65	9.75
4	4-1/2	16.00	16.25

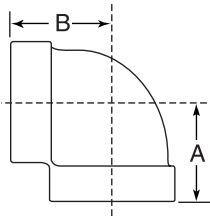
90° Street Elbow
Figure 1170



Size (NPS)	A (in)	J (in)	Weight (lbs)	
			black	galv.
1/4	15/16	1-7/16	.17	.18
3/8	1-1/16	1-5/8	.26	.27
1/2	1-1/4	2	.40	.42
3/4	1-7/16	2-3/16	.68	.71
1	1-5/8	2-9/16	1.06	1.10
1-1/4	1-15/16	2-7/8	1.60	1.61
1-1/2	2-1/8	3-1/8	2.20	2.25
2	2-1/2	3-11/16	3.56	3.75
3	3-3/8	5-1/8	9.55*	9.88*

*POA

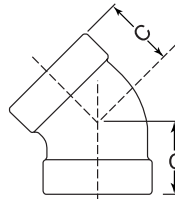
90° Reducing Elbow
Figure 1161R



Size (NPS)	A (in)	B (in)	Weight (lbs)	
			black	galv.
3/8 x 1/4	1	1	.26*	—
1/2 x 3/8	1-3/16	1-3/16	.41*	—
3/4 x 1/2	1-5/16	1-3/8	.62*	.67*
1 x 1/2	1-7/16	1-1/2	.87	.89
1 x 3/4	1-1/2	1-9/16	1.00	—
1-1/4 x 3/4	1-5/8	1-3/4	1.41	—
1-1/4 x 1	1-3/4	1-13/16	1.60*	—
1-1/2 x 1	1	1-13/16	2	—
1-1/2 x 1-1/4	2	2-1/16	2.15	—
2 x 1-1/4	2-1/8	2-5/16	3.12	—
2 x 1-1/2	2-1/4	2-3/8	3.30	3.30

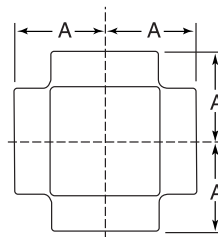
*POA

45° Elbow
Figure 1162



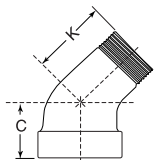
Size (NPS)	C (in)	Weight (lbs)	
		black	galv.
1/4	13/16	.19	.20
3/8	7/8	.28	.29
1/2	1	.43	.44
3/4	1-1/8	.66	.68
1	1-5/16	1.00	1.01
1-1/4	1-1/2	1.67	1.70
1-1/2	1-11/16	2.15	2.28
2	2	3.40	3.50
2-1/2	2-1/4	5.51	5.59
3	2-1/2	8.10	8.50
4	2-13/16	13.41	13.79

Cross
Figure 1165



Size (NPS)	Center to End A (in)	Weight (lbs)	
		black	galv.
1/4	15/16	.35*	.36*
3/8	1-1/16	.46*	—
3/4	1-7/16	1.25	1.32
1	1-5/8	1.90	—
1-1/4	1-15/16	3.23*	3.28*
1-1/2	2-1/8	4.20*	4.35*
2	2-1/2	6.40*	6.60*

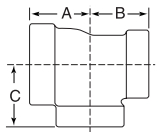
45° Street Elbow
Figure 1160



Size (NPS)	C (in)	K (in)	Weight black (lbs)
1/2	1	1-3/8	.36
3/4	1-1/8	1-9/16	.54
1	1-5/16	1-13/16	.85
1-1/4	1-1/2	2-1/8	1.52
1-1/2	1-11/16	2-5/16	2.06
2	2	2-11/16	3.34

ANVIL™ MALLEABLE IRON FITTINGS—CLASS 300
INTERNATIONAL, INC.

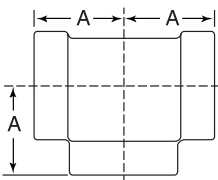
Reducing Tee
Figure 1164R



Size (NPS)	Center to End			Weight (lbs)			
	A (in)	B (in)	C (in)	black	galv.		
3/8	3/8	1/4	1	1	1	.37	—
1/2	1/2	1/4	1-1/16	1-1/16	1-1/8	.48*	.52
		3/8	1-3/16	1-3/16	1-3/16	.61*	—
		3/4	1-3/8	1-3/8	1-5/16	.80	—
3/4	1/2	3/4	1-7/16	1-3/8	1-7/16	.93	—
		1/2	1-5/16	1-1/4	1-3/8	.78	—
		1/4	1-3/16	1-3/16	1-1/4	.76*	.80
1	3/4	3/8	1-1/4	1-1/4	1-5/16	.80	—
		1/2	1-5/16	1-5/16	1-3/8	.90	.88
		1/4	1-1/4	1-1/4	1-3/8	1.09	—
1	1	1/2	1-7/16	1-7/16	1-1/2	1.26	1.29
		3/4	1-1/2	1-1/2	1-9/16	1.33	1.43
		1	1-5/8	1-9/16	1-5/8	1.38	—
1-1/4	1-1/4	1/4	1-1/4	1-1/4	1-3/8	1.09	—
		1/2	1-1/2	1-1/2	1-11/16	1.70	1.88
		3/4	1-5/8	1-5/8	1-3/4	1.90	1.99
1-1/2	1-1/2	1	1-3/4	1-3/4	1-13/16	2.10	2.13
		1/2	1-5/8	1-5/8	1-13/16	2.27	2.32
		3/4	1-11/16	1-11/16	1-7/8	2.46	2.47
1-1/2	1-1/2	1	1-13/16	1-13/16	2	2.60	2.70
		1-1/4	2	2	2-1/16	3.05*	3.12*
		1-1/2	2	2-1/2	2-3/8	4.50	—
2	2	1/2	1-3/4	1-3/4	2-1/16	3.35	3.54
		3/4	1-13/16	1-13/16	2-1/8	3.56	3.60
		1	2	2	2-1/4	3.97	4.00
		1-1/4	2-1/8	2-1/8	2-5/16	4.21	4.40
		1-1/2	2-1/4	2-1/4	2-3/8	4.60	4.70
2-1/2	2-1/2	1-1/2	2-7/16	2-7/16	2-5/8	6.35*	6.60*
3	3	2	2-11/16	2-11/16	2-3/4	7.59*	7.50*
		3	2-13/16	2-13/16	3-1/8	9.60	10.10

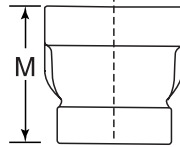
*POA

Straight Tee
Figure 1164



Size (NPS)	Center to End A (in)	Weight (lbs)	
		black	galv.
1/4	1-5/16	.27	.30
3/8	1-1/16	.42	.43
1/2	1-1/4	.65	.69
3/4	1-7/16	1.07	1.10
1	1-5/8	1.63	1.65
1-1/4	1-15/16	2.53	2.59
1-1/2	2-1/8	3.40	3.49
2	2-1/2	5.20	5.40
2-1/2	2-15/16	7.96	8.04
3	3-3/8	12.56	12.75
4	4-1/2	23.86	24.05

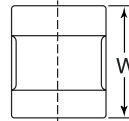
Reducer
Figure 1167



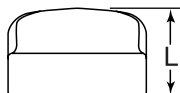
Size (NPS)	End to End M (in)	Weight (lbs)		
		black	galv.	
3/8	1/4	1-7/16	.21	.22
1/2	1/4	1-11/16	.31	.31
	3/8	1-11/16	.34	.36
3/4	1/4	1-3/4	.46*	.49*
	3/8	1-3/4	.47*	.48*
1	1/2	1-3/4	.50	.52
	1/4	2	.66	.68
	3/8	2	.71	.73
1-1/4	1/2	2	.71	.75
	3/4	2	.79	.82
	1/2	2-3/8	1.12*	1.14*
1-1/2	3/4	2-3/8	1.16*	1.22*
	1	2-3/8	1.29	1.25
	1/2	2-11/16	1.51	1.54
2	3/4	2-11/16	1.57	1.60
	1	2-11/16	1.62	1.70
	1-1/4	2-11/16	1.81	1.86
2-1/2	1/2	3-3/16	2.39*	—
	3/4	3-3/16	2.44	2.50
	1	3-3/16	2.53	2.58
3	1-1/4	3-3/16	2.66	2.72
	1-1/2	3-3/16	2.72	2.88
	1-1/2	3-11/16	4.09	4.30
4	2	3-11/16	4.32	4.54
	1-1/2	4-1/16	5.79*	5.87*
	2	4-1/16	5.75	5.50
4	2-1/2	4-1/16	6.45	6.60
	2	4-3/8	9.50	9.60
4	3	4-3/8	10.00	10.60

*POA

Coupling
Figure 1166



Cap
Figure 1163







Size (NPS)	End to End W (NPS)	Weight (lbs)	
		black	galv.
1/4	1-3/8	.17	.18
3/8	1-5/8	.26	.27
1/2	1-7/8	.42	.43
3/4	2-1/8	.65	.68
1	2-3/8	.99	1.03
1-1/4	2-7/8	1.64	1.67
1-1/2	2-7/8	2.04	2.08
2	3-5/8	3.24	3.30
2-1/2	4-1/8	5.45	5.65
3	4-1/8	7.30	7.40

Size (NPS)	Height L (in)	Weight (lbs)	
		black	galv.
1/4	25/32	.10	.11
3/8	13/16	.15	.15
1/2	1	.23	.24
3/4	1-1/16	.35	.36
1	1-1/4	.58	.58
1-1/4	1-3/8	.94	.95
1-1/2	1-7/16	1.18	1.32
2	1-11/16	1.94	1.96
2-1/2	2-1/16	3.32	3.35
3	2-3/16	4.71	4.80



MALLEABLE IRON UNIONS—CLASS 150; 250; 300

Copper or Copper Alloy to Iron				
Unions	Size (NPS)	End to End (in)	Weight (lbs)	
			black	galv.
Class 150 Union Figure 463 150 lb. wsp 300 lb. wog non-shock †UL Listed 	1/8	1-5/16	.15	.15
	†1/4	1-13/16	.46	.47
	†3/8	1-13/16	.42	.43
	†1/2	1-15/16	.44	.45
	†3/4	2-1/15	.60	.63
	†3/4 x 1/2	2-1/16	.55	.59
	†1	2-7/16	.91	.94
	†1-1/4	2-5/8	1.45	1.45
	†1-1/2	2-3/4	1.69	1.72
	†2	2-15/16	2.46	2.44
	2-1/2	3-5/8	3.60	3.70
	3	3-3/4	4.95	4.98
Class 250 Union Figure 554 250 lb. wsp 500 lb. wog non-shock †UL Listed 	1/8	1-5/16	.14	.14
	†1/4	1-13/16	.46	.47
	†3/8	1-13/16	.42	.43
	†1/2	2-1/16	.53	.54
	†3/4	2-1/4	.80	.82
	†1	2-9/16	1.28	1.30
	†1-1/4	2-3/4	1.63	1.65
	†1-1/2	3	2.06	2.10
	†2	3-3/8	3.48	3.49
	2-1/2	3-7/8	5.30	5.38
	3	4-1/4	7.60	7.76
	4	4-7/8	17.50	17.86
Class 300 Union Figure 459 300 lb. wsp 600 lb. wog non-shock 	1/8	1-5/16	.14	.14
	1/4	1-13/16	.47	.48
	3/8	1-13/16	.43	.44
	1/2	2-1/16	.53	.55
	3/4	2-1/4	.80	.82
	1	2-9/16	1.27	1.30
	1-1/4	2-3/4	1.63	1.72
	1-1/2	3	2.13	2.20
	2	3-8/8	3.46	3.47
	2-1/2	3-7/8	5.05	5.45
	3	4-1/4	7.66	7.73
	4	4-7/8	17.70	17.83
Class 300 Union Figure 551 300 lb. wsp 600 lb. wog non-shock 	1/2	3	.62	—
	3/4	3-3/16	.92	—
	1	3-5/8	1.54	—
	1-1/2	4-1/2	2.60	2.73
	2	4-5/8	2.41	—

Class 300 90° Elbow
Female Union
Figure 552 300 lb. wsp



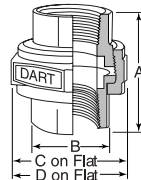
Copper or Copper Alloy to Iron			
Size (NPS)	Ctr. to End (in)		Wt. (lbs) black
	Elbow	Union	
3/8	1-1/16	2-1/16	.51
1/2	1-1/4	2-5/16	.79
3/4	1-7/16	2-3/4	1.24
1	1-5/8	3	1.88

All Iron Union
Class 300
Figure J-3



Size (NPS)	End to End (in)	Weight (lbs)	
		black	galv.
1/8	1-1/2	.18	.19
1/4	1-5/8	.28	.29
3/8	1-13/16	.36	.37
1/2	2-1/8	.56	.57
3/4	2-7/16	.84	.87
1	2-3/4	1.27	1.31
1-1/4	3	2.04	2.10
1-1/2	3-3/16	2.74	2.82
2	3-1/2	4.16	4.28
2-1/2	3-11/16	6.00	6.18
3	3-15/16	7.60	7.83

Dart Union
Bronze to
Bronze Seat
Union
Figure 0832

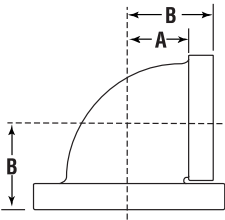


Size (NPS)	A (in)	B (in)	C (in)	D (in)	Weight (lbs)	
					black	galv.
3/8	1-3/4	15/16	1-1/2	1-3/4	0.41	0.43
1/2	2-1/8	1-1/8	1-3/16	2	0.58	0.61
3/4	2-5/16	1-3/8	2-3/16	2-1/2	0.82	0.86
1	2-5/8	1-11/16	2-9/16	3	1.31	1.37
1-1/4	2 13/16	2-1/16	3-1/16	3-1/2	1.91	2.03
1-1/2	3	2-3/16	3-3/8	4	2.32	2.44
2	3-5/8	2-7/8	4-1/16	4-5/8	4.00	4.20



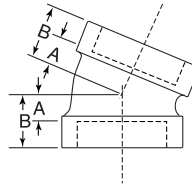
CAST IRON THREADED FITTINGS CLASS 125, (STANDARD)

90° Elbow Straight
Figure 351



Size (NPS)	A (in)	B (in)	Weight (lbs)	
			black	galv.
1/4	1/2	13/16	.16	.17
3/8	9/16	15/16	.25	.26
1/2	11/16	1-1/8	.40	.41
3/4	13/16	1-5/16	.60	.61
1	15/16	1-1/2	.92	.95
1-1/4	1-1/8	1-3/4	1.44	1.46
1-1/2	1-5/16	1-15/16	1.95	2.00
2	1-9/16	2-1/4	3.13	3.21
2-1/2	1-13/16	2-11/16	4.94	5.13
3	2-3/16	3-1/8	7.21	7.40
4	2-11/16	3-13/16	12.17	12.67
5	3-5/16	4-1/2	21.46	—
6	3-7/8	5-1/8	31.33	33.33
8	5-3/16	6-9/16	64.56	67.14

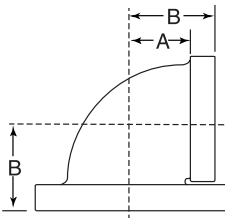
22-1/2° Elbow
Figure 356A



Size (NPS)	A (in)	B (in)	Weight (lbs)	
			black	galv.
3/4	3/8	7/8	.52	•
1	7/16	1	.80	•
1-1/4	1/2	1-1/8	1.40	•
1-1/2	5/8	1-1/4	1.64	•
2	3/4	1-7/16	2.50	•
2-1/2	3/4	1-5/8	3.95	•

*Not stocked

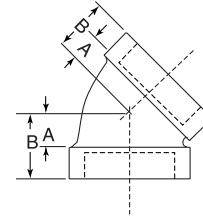
90° Elbow Flanged and Threaded
Figure 371



Size (NPS)	A (in)	B (in)	Weight (lbs) black
2-1/2	1-13/16	2-11/16	10.22
3	2-3/16	3-1/8	13.25
4	2-11/16	3-13/16	21.56
5	3-5/16	4-1/2	28.13
6	3-7/8	5-1/8	40.50
8	5-3/16	6-9/16	80.06

*Nominal Pipe Sizes of 4" and larger have two holes tapped for stud or tap bolts.

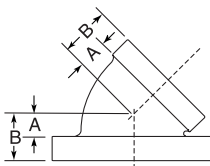
45° Elbow
Figure 356



Size (NPS)	A (in)	B (in)	Weight (lbs)	
			black	galv.
1/4	7/16	3/4	.16	.17
3/8	7/16	13/16	.23	—
1/2	7/16	7/8	.37	.38
3/4	1/2	1	.55	.56
1*	9/16	1-1/8	.83	.88
1-1/4	5/8	1-1/4	1.33	1.36
1-1/2	13/16	1-7/16	1.79	1.83
2	1	1-11/16	2.89	2.96
2-1/2	1-1/16	1-15/16	4.29	4.35
3	1-3/16	2-3/16	6.44	6.56
3-1/2	1-3/8	2-3/8	8.42	—
4	1-9/16	2-5/8	10.64	11.22
5	1-7/8	3-1/16	16.96	17.38
6	2-3/16	3-7/16	26.02	26.19
8	2-7/8	4-1/4	50.17	52.00

*1 NPS size available in 1 NPS x 1/2 NPS reducing size, black or galvanized.

45° Elbow Flanged and Threaded
Figure 372



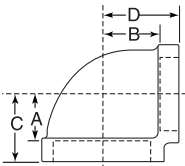
Size (NPS)	A (in)	B (in)	Weight (lbs) black
4	1-9/16	2-5/8	19.88
6	2-3/16	3-7/16	35.31
8	2-7/8	4-1/4	64.41

Cast Iron Threaded Fittings Pressure-Temperature Ratings		
Temp. (°F)	Pressure, (psig)	
	Class 125	Class 250
-20° to 150°	175	400
200°	165	370
250°	150	340
300°	140	310
350°	125	300
400°	—	250



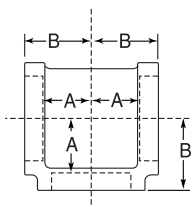
CAST IRON THREADED FITTINGS CLASS 125, (STANDARD)

90° Reducing Elbow—Figure 352



Size (NPS)		A (in)	B (in)	C (in)	D (in)	Weight (lbs) black
1/2	1/4	5/8	3/4	1-1/16	1-1/16	.40
1/2	3/8	5/8	11/16	1-1/16	1-1/16	.34
3/4	1/2	11/16	13/16	1-3/16	1-1/4	.51
1	1/2	11/16	15/16	1-1/4	1-3/8	.67
1	3/4	13/16	15/16	1-3/8	1-7/16	.76
1-1/4	1/2	11/16	1-1/16	1-5/16	1-1/2	1.07
1-1/4	3/4	13/16	1-1/8	1-7/16	1-5/8	1.02
1-1/4	1	15/16	1-1/8	1-9/16	1-11/16	1.21
1-1/2	1/2	3/4	1-1/4	1-3/8	1-5/8	1.53
1-1/2	3/4	7/8	1-5/16	1-1/2	1-13/16	1.55
1-1/2	1	1	1-1/4	1-5/8	1-13/16	1.44
1-1/2	1-1/4	1-3/16	1-1/4	1-13/16	1-7/8	1.74
2	1/2	1-3/16	1-7/16	1-1/2	1-3/8	2.22
2	3/4	1-5/16	1-1/2	1-5/8	2	2.20
2	1	1-1/16	1-7/16	1-3/4	2	2.08
2	1-1/4	1-3/16	1-7/16	1-7/8	2-1/16	2.33
2	1-1/2	1-5/16	1-1/2	2	2-1/8	2.59
2-1/2	2	1-9/16	1-7/8	2-7/16	2-9/16	4.01
2-1/2	1	1-3/16	1-3/4	1-15/16	2-5/16	2.93
2-1/2	1-1/4	1-3/16	1-3/4	2-1/16	2-3/8	3.41
2-1/2	1-1/2	1-5/16	1-13/16	2-3/16	2-7/16	3.68
3	1-1/4	1-5/8	2-5/16	2-9/16	2-15/16	5.98
3	1-1/2	1-5/8	2-5/16	2-9/16	2-15/16	5.65
3	2	1-5/8	2-1/4	2-9/16	2-15/16	5.65
3	2-1/2	1-7/8	2-3/16	2-13/16	3-1/16	6.44
3-1/2	3	2-3/16	2-7/16	3-3/16	3-3/8	8.95
4	2	2-3/16	2-15/16	3-1/4	3-5/8	11.89
4	2-1/2	2-3/16	2-3/4	3-1/4	3-5/8	11.27
4	3	2-3/16	2-11/16	3-1/4	3-5/8	10.63
4	3-1/2	2-7/16	2-11/16	3-1/2	3-11/16	11.89
5	4	2-13/16	3-5/16	4	4-3/8	16.47
5	2-1/2	2-13/16	3-1/2	4	4-3/8	19.88
5	3	2-13/16	3-7/16	4	4-3/8	19.00
6	3	2-5/16	3-13/16	3-9/16	4-13/16	19.43
6	4	2-13/16	3-7/8	4-1/16	4-15/16	23.53
6	5	3-3/8	3-13/16	4-5/8	5	26.66
8	6	4-3/16	5-1/8	5-9/16	6-3/8	51.11

Straight Tee Figure 358

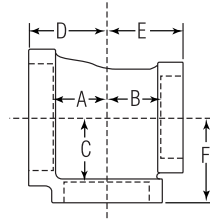


Size (NPS)	A (in)	B (in)	Weight (lbs)	
			black	galv.
1/4	1/2	13/16	.22	.23
3/8	5/8	1	.35	.36
1/2	11/16	1-1/8	.56	.58
3/4	13/16	1-5/16	.84	.85
1	15/16	1-1/2	1.25	1.31
1-1/4	1-1/8	1-3/4	2.03	2.07
1-1/2	1-5/16	1-15/16	2.70	2.72
2	1-9/16	2-1/4	4.23	4.33
2-1/2	1-13/16	2-11/16	6.67	6.79
3	2-3/16	3-1/8	10.00	10.16
3-1/2	2-7/16	3-7/16	13.29	13.82
4	2-11/16	3-3/4	16.33	16.99
5	3-5/16	4-1/2	27.33	27.67
6	3-7/8	5-1/8	40.85	41.40
8	5-3/16	6-9/16	79.00	81.25



CAST IRON THREADED FITTINGS CLASS 125, (STANDARD)

Reducing Tee
 Figure 359



Size (NPS)		Reducing Tee: Figure 359									
s x t x u		A (in)	B (in)	C (in)	D (in)	E (in)	F (in)	Wt. (lbs)			
		black		galv.							
1/2	1/2	1/4	11/16	11/16	13/16	1-1/8	1-1/8	1-1/8	0.57	—	
		3/8	11/16	11/16	3/4	1-1/8	1-1/8	1-1/8	.057	—	
		3/4	13/16	13/16	11/16	1-1/4	1-1/4	13/16	0.68	—	
		1	1	1	13/16	1-7/16	1-7/16	1-3/8	1	—	
3/4	1/2	1/4	3/4	13/16	15/16	13/16	15/16	1-1/4	15/16	0.79	—
		1/2	11/16	11/16	13/16	13/16	1-1/8	1-1/4	0.64	—	
		3/4	13/16	13/16	13/16	15/16	1-1/4	15/16	0.75	—	
	3/4	1/4	9/16	9/16	7/8	11/16	11/16	13/16	0.62	—	
		3/8	11/16	11/16	15/16	13/16	13/16	1-1/4	0.75	—	
		1/2	11/16	11/16	13/16	13/16	13/16	1-1/4	0.76	—	
		1	15/16	15/16	13/16	1-7/16	1-7/16	1-3/8	0.99	—	
		1	15/16	15/16	13/16	1-7/16	1-7/16	1-3/8	0.99	—	
1	1/4	1	15/16	15/16	15/16	1-1/2	1-1/4	1-1/2	1.08	—	
		1/2	11/16	3/4	15/16	1-1/4	13/16	1-3/8	0.9	—	
		3/4	13/16	13/16	15/16	1-3/8	1-1/4	1-7/16	0.91	—	
	1/2	1	15/16	15/16	15/16	1-1/2	1-3/8	1-1/2	1.08	—	
		1/2	11/16	11/16	15/16	1-1/4	13/16	1-3/8	0.89	—	
		3/4	13/16	13/16	15/16	1-3/8	15/16	1-7/16	1	—	
		1	15/16	15/16	15/16	1-1/2	1-7/16	1-1/2	1.13	—	
		1/4	11/16	11/16	1-1/8	1-1/8	1-1/4	1-3/8	1.01	—	
		1/2	11/16	11/16	15/16	1-1/4	1-1/4	1-3/8	1.01	1.03	
	1	3/4	13/16	13/16	15/16	1-3/8	1-3/8	1-7/16	1.11	—	
		1-1/8	1-1/8	1-1/8	15/16	1-11/16	1-11/16	1-9/16	1.49	—	
		1-1/2	1-1/4	1-1/4	1	1-13/16	1-13/16	1-5/8	1.84	—	
1/2		13/16	13/16	1-1/8	1-7/16	15/16	1-5/8	1	—		
1		15/16	15/16	1-1/8	1-9/16	1-3/8	1-11/16	1.38	—		
1-1/8		1-1/8	1-1/8	1-1/8	1-3/4	1-9/16	1-3/4	1.64	—		
1-1/8	3/4	1	15/16	15/16	1-1/8	1-7/16	15/16	1-5/8	1.27	—	
		1-1/8	1-1/8	1-1/8	1-1/8	1-3/4	1-5/8	1-3/4	1.73	—	
		1-1/2	1-1/8	1-1/8	1-1/8	1-3/4	1-5/8	1-3/4	1.73	—	
	1	1/2	11/16	11/16	1-1/8	15/16	1-1/4	1-9/16	1.27	1.31	
		3/4	13/16	13/16	1-1/8	1-7/16	1-3/8	1-5/8	1.36	—	
		1	15/16	15/16	1-1/8	1-9/16	1-9/16	1-11/16	1.53	1.56	
		1-1/8	1-1/8	1-1/8	1-1/8	1-3/4	1-11/16	1-3/4	1.79	—	
		1-1/2	1-1/4	1-1/4	1-1/8	1-13/16	1-13/16	1-13/16	2.07	—	
		2	1-7/16	1-7/16	13/16	2-1/16	2	1-7/8	2.66	—	
	1-1/8	1/2	11/16	11/16	1-1/8	15/16	15/16	1-9/16	1.47	—	
		3/4	13/16	13/16	1-1/8	1-7/16	1-7/16	1-5/8	1.57	—	
		1	15/16	15/16	1-1/8	1-9/16	1-9/16	1-11/16	1.73	—	
1-1/2		1-1/4	1-1/4	13/16	1-7/8	1-7/8	1-13/16	2.29	—		
2		1-7/16	1-7/16	13/16	2-1/16	2-1/16	1-7/8	2.81	—		
2		1-7/16	1-7/16	13/16	2-1/16	2-1/16	1-7/8	2.81	—		

Size (NPS)		Reducing Tee: Figure 359									
s x t x u		A (in)	B (in)	C (in)	D (in)	E (in)	F (in)	Wt. (lbs)			
		black		galv.							
1/2	1/2	1-1/8	13/16	1-1/8	1-1/4	1-13/16	1-9/16	1-7/8	1.93	—	
		1-1/2	15/16	1-1/4	15/16	1-15/16	1-11/16	1-15/16	2.14	—	
		3/4	1-1/2	15/16	1-1/4	15/16	1-15/16	1-3/4	1-15/16	2.18	—
		1	1-1/2	15/16	1-1/4	15/16	1-15/16	1-13/16	1-15/16	2.29	—
	1	3/4	1/2	13/16	3/4	1-1/4	1-7/16	15/16	1-11/16	1.75	—
			3/4	7/8	13/16	1-1/4	1-1/2	1-3/8	1-3/4	1.7	—
			1	1	15/16	1-1/4	1-5/8	1-1/2	1-13/16	1.72	—
			1-1/8	13/16	1-1/8	1-1/4	1-13/16	1-11/16	1-7/8	2.08	—
		1-1/2	1-1/2	15/16	1-1/4	15/16	1-15/16	1-13/16	1-15/16	2.29	—
			2	1-1/2	1-7/16	15/16	2-1/8	2	2	2.91	—
			1/2	13/16	11/16	1-1/4	1-7/16	15/16	1-11/16	1.67	1.73
			3/4	7/8	13/16	1-1/4	1-1/2	1-7/16	1-3/4	1.79	—
1-1/8	1	1	1	15/16	1-1/4	1-5/8	1-9/16	1-13/16	1.97	2.05	
		1-1/8	13/16	1-1/8	1-1/4	1-13/16	1-3/4	1-7/8	2.28	—	
		1-1/2	15/16	1-1/4	15/16	1-15/16	1-7/8	1-15/16	2.5	—	
		2	1-1/2	1-7/16	15/16	2-1/8	2-1/16	2	3.07	—	
	1-1/2	1/2	13/16	13/16	1-1/4	1-7/16	1-7/16	1-11/16	1.84	—	
		3/4	7/8	7/8	1-1/4	1-1/2	1-1/2	1-3/4	1.95	—	
		1	1	1	1-1/4	1-5/8	1-5/8	1-13/16	2.13	2.17	
		1-1/8	13/16	13/16	1-1/4	1-13/16	1-13/16	1-7/8	2.44	—	
1	1-1/2	2	1-1/2	1-1/2	15/16	2-1/8	2-1/8	2	3.23	—	
		2-1/2	1-13/16	1-13/16	15/16	2-7/16	2-7/16	2-3/16	4.15	—	
		1/2	15/16	1-3/8	1-1/2	2	1-13/16	2-1/8	2.95	—	
		2	1-9/16	1-7/16	1-9/16	2-1/4	1-7/8	2-1/4	3.3	—	
	3/4	1-1/8	13/16	1-1/8	1-7/16	1-7/8	1-3/4	2-1/6	2.5	—	
		1-1/2	15/16	15/16	1-1/2	2	1-13/16	2-1/8	3.4	—	
		2	1-9/16	1-7/16	1-9/16	2-1/4	1-15/16	2-1/4	3.31	—	
		1	11/16	11/16	1-7/16	1-3/4	1-5/8	2	2.7	—	
		1-1/8	13/16	1-1/8	1-1/2	1-7/8	1-3/4	2-1/16	2.94	—	
		1-1/2	15/16	1-1/4	1-1/2	2	1-13/16	2-1/8	2.85	—	
		2	1-9/16	1-7/16	1-9/16	2-1/4	2	2-1/4	3.46	—	
		2-1/2	1-7/8	1-13/16	1-9/16	2-9/16	2-3/8	2-7/16	4.88	—	
1-1/8	1/2	1/2	11/16	1	1-7/16	1-3/4	1-5/8	2	2.48	—	
		3/4	7/8	7/8	1-7/16	1-9/16	1-1/2	1-15/16	2.5	—	
		1	11/16	1	1-7/16	1-3/4	1-5/8	2	2.73	—	
		1-1/8	13/16	1-1/8	1-7/16	1-7/8	1-3/4	2-1/16	2.9	—	
	1	1-1/2	15/16	1-1/4	1-1/2	2	1-7/8	2-1/8	3.13	—	
		2	1-9/16	1-7/16	1-9/16	2-1/4	2-1/16	2-1/4	3.71	—	
		2-1/2	1-7/8	1-3/4	1-9/16	2-9/16	2-3/8	2-7/16	4.54	—	
		1/2	13/16	13/16	1-7/16	1-1/2	1-7/16	1-7/8	2.34	2.38	
		3/4	7/8	7/8	1-7/16	1-9/16	1-1/2	1-15/16	2.46	—	
		1	11/16	1	1-7/16	1-3/4	1-5/8	2	2.66	—	
		1-1/8	13/16	13/16	1-7/16	1-7/8	1-13/16	2-1/16	2.98	—	
		1-1/2	15/16	15/16	1-1/2	2	1-15/16	2-1/8	3.24	—	
1-1/2	1	2	1-9/16	1-1/2	1-9/16	2-1/4	2-1/8	2-1/4	3.7	—	
		2-1/2	1-7/8	1-15/16	1-9/16	2-9/16	2-9/16	2-7/16	5.46	—	
		1/2	13/16	13/16	1-7/16	1-1/2	1-1/2	1-7/8	2.74	2.81	
		3/4	7/8	7/8	1-7/16	1-9/16	1-9/16	1-15/16	2.86	—	
	1-1/8	1	11/16	11/16	1-7/16	1-3/4	1-3/4	2	3.05	3.14	
		1-1/8	13/16	13/16	1-7/16	1-7/8	1-7/8	2-1/16	3.38	—	
		1-1/2	15/16	15/16	1-1/2	2	2	2-1/8	3.59	3.74	
		2-1/2	1-7/8	1-7/8	1-9/16	2-9/16	2-9/16	2-7/16	5.17	5.38	
		4	3	3	2-7/16	3-11/16	3-11/16	3-1/2	16.07	—	



ANVIL
INTERNATIONAL, INC.

CAST IRON THREADED FITTINGS CLASS 125, (STANDARD)

Reducing Tee: Figure 359											
Size (NPS)		A	B	C	D	E	F	Wt. (lbs)			
s	x t x u	(in)	(in)	(in)	(in)	(in)	(in)	black	galv.		
2-1/2	1/2	2	1-9/16	1-11/16	1-7/8	2-7/16	2-1/8	2-9/16	5.29	—	
		2-1/2	1-13/16	1-13/16	1-13/16	2-11/16	2-1/4	2-11/16	5.2	—	
	3/4	2-1/2	1-13/16	1-3/4	1-13/16	2-11/16	2-1/4	2-11/16	5.1	—	
		1	2	1-9/16	1-9/16	1-7/8	2-7/16	2-1/8	2-9/16	5.03	—
	1	2-1/2	1-13/16	1-3/4	1-13/16	2-11/16	2-5/16	2-11/16	5.36	—	
		1-1/2	15/16	15/16	1-13/16	2-3/16	1-15/16	2-7/16	4.28	—	
	1-1/8	2	1-9/16	1-1/2	1-7/8	2-7/16	2-1/8	2-9/16	4.96	—	
		2-1/2	1-13/16	1-3/4	1-13/16	2-11/16	2-3/8	2-11/16	5.4	—	
	1-1/2	1-1/2	15/16	15/16	1-13/16	2-3/16	1-15/16	2-7/16	4.23	—	
		2	1-9/16	1-1/2	1-7/8	2-7/16	2-1/8	2-9/16	4.85	—	
	2-1/2	2-1/2	1-13/16	1-13/16	1-13/16	2-11/16	2-7/16	2-11/16	5.82	—	
			1/2	3/4	13/16	1-3/4	1-11/16	1-1/2	2-3/16	3.57	—
		3/4	7/8	7/8	1-3/4	1-3/4	1-9/16	2-1/4	3.62	—	
			1	1	11/16	1-3/4	1-15/16	1-3/4	2-5/16	3.92	—
		2	1-1/8	13/16	13/16	1-3/4	2-1/16	1-7/8	2-3/8	4.26	—
			1-1/2	15/16	15/16	1-13/16	2-3/16	2	2-7/16	4.42	—
		2	2	1-9/16	1-9/16	1-7/8	2-7/16	2-1/4	2-9/16	5.17	—
			2-1/2	1-13/16	1-7/8	1-13/16	2-11/16	2-9/16	2-11/16	6	—
		2-1/2	1/2	3/4	3/4	1-3/4	1-11/16	1-11/16	2-3/16	4	—
				3/4	7/8	7/8	1-3/4	1-3/4	1-3/4	2-1/4	4.29
			1	1	1	1-3/4	1-15/16	1-15/16	2-5/16	4.48	—
				1-1/8	13/16	13/16	1-3/4	2-1/16	2-1/16	2-3/8	4.83
	1-1/2		15/16	15/16	1-13/16	2-3/16	2-3/16	2-7/16	5.14	—	
			2	1-9/16	1-9/16	1-7/8	2-7/16	2-7/16	2-9/16	5.88	6.02
4	2-3/4	2-13/16	2-7/16	3-11/16	3-11/16	3-1/2	14.03	—			
	3	2-1/8	2-1/4	2-1/8	3-1/8	2-11/16	3-1/8	7.6	—		
3	3/4	3	2-1/8	2-1/8	2-1/8	3-1/8	2-11/16	3-1/8	8.25	—	
		1	3	2-1/8	2-1/8	2-1/8	3-1/8	2-11/16	3-1/8	8.3	—
	1-1/8	3	2-1/8	2-1/8	2-1/8	3-1/8	2-13/16	3-1/8	8.46	—	
		2-1/2	1-7/8	1-7/8	2-1/8	2-13/16	2-9/16	3-1/16	7.67	—	
	1-1/2	3	2-1/8	2-3/16	2-1/8	3-1/8	2-13/16	3-1/8	8.13	—	
		1-1/2	1-3/8	1-1/2	2-3/16	2-5/16	2-3/16	2-13/16	6.83	—	
	2	2	1-9/16	1-9/16	2-3/16	2-9/16	2-1/4	2-15/16	7.29	—	
		2-1/2	1-7/8	1-15/16	2-1/8	2-13/16	2-9/16	3-1/16	7.1	—	
	3	3	2-1/8	2-3/16	2-1/8	3-1/8	2-15/16	3-1/8	8.79	—	
		1	1	15/16	2-1/8	2-1/16	1-15/16	2-11/16	5.51	—	
	3	2-1/2	1-1/8	1-1/4	13/16	2-1/8	2-3/16	2-1/16	2-3/4	5.92	—
			1-1/2	1-3/8	15/16	2-3/16	2-5/16	2-3/16	2-13/16	6.23	6.33
2		2	1-9/16	1-1/2	2-3/16	2-9/16	2-7/16	2-15/16	6.81	—	
		2-1/2	1-7/8	1-13/16	2-1/8	2-13/16	2-11/16	3-1/16	7.66	—	
3		3	2-1/8	2-1/8	2-1/8	3-1/8	3-1/16	3-1/8	9.13	—	
		1/2	15/16	15/16	2-3/16	1-7/8	1-7/8	2-5/8	6.08	6.17	
3/4		15/16	15/16	2-1/8	1-7/8	1-7/8	2-5/8	6.06	6.17		
		1	1	1	2-1/8	2-1/16	2-1/16	2-11/16	6.27	6.54	
3		1-1/8	1-1/4	1-1/4	2-1/8	2-3/16	2-3/16	2-3/4	6.75	—	
			1-1/2	1-3/8	1-3/8	2-3/16	2-5/16	2-5/16	2-5/16	7.1	7.27
		2	1-9/16	1-9/16	2-3/16	2-9/16	2-9/16	2-7/8	7.75	7.83	
			2-1/2	1-7/8	1-7/8	2-1/8	2-13/16	2-13/16	3-1/16	8.92	8.96
	3-1/2	2-3/8	2-3/8	2-3/16	3-3/8	3-3/8	3-3/16	11.1	—		
		4	2-11/16	2-11/16	2-7/16	3-11/16	3-11/16	3-1/2	12.8	—	
5	3-3/8	3-5/16	2-9/16	4-5/16	4-5/16	3-3/4	20.25	—			

Reducing Tee: Figure 359											
Size (NPS)		A	B	C	D	E	F	Wt. (lbs)			
s	x t x u	(in)	(in)	(in)	(in)	(in)	(in)	black	galv.		
3-1/2	1-1/8	3	2-3/16	2-1/2	2-3/8	3-3/16	3-1/8	3-3/8	12.54	—	
		2	3-1/2	2-7/16	2-7/16	2-7/16	3-7/16	3-5/16	3-7/16	12.93	—
	2-1/2	2-1/2	1-15/16	1-15/16	2-3/8	2-7/8	2-13/16	3-5/16	10.69	—	
		3-1/2	2-7/16	2-3/8	2-7/16	3-7/16	3-5/16	3-7/16	12.56	—	
	3	3	2-3/16	2-1/8	2-3/8	3-3/16	3	3-5/16	11.77	—	
		4	2-11/16	2-5/8	2-1/2	3-11/16	3-11/16	3-1/2	15.27	—	
	3-1/2	1-1/2	1-3/8	1-3/8	2-7/16	2-3/8	2-5/16	3-1/16	8.33	—	
			2	1-5/8	1-9/16	2-7/16	2-5/8	2-9/16	3-3/16	8.66	—
		2	1-15/16	1-7/8	2-3/8	2-7/8	2-13/16	3-5/16	10	—	
			3	2-3/16	2-1/8	2-3/8	3-3/16	3-1/8	3-3/8	11.33	—
		3-1/2	3-1/2	2-7/16	2-3/8	2-7/16	3-7/16	3-7/16	3-7/16	13.95	—
			4	2-11/16	2-11/16	2-1/2	3-11/16	3-11/16	3-1/2	15.23	—
	4	3/4	3-5/16	3-5/16	2-9/16	4-5/16	4-5/16	3-3/4	20.28	—	
			1	11/16	11/16	2-3/8	2-1/8	2-1/8	2-15/16	8	—
		1-1/8	1-1/4	1-1/4	2-3/8	2-1/4	2-1/4	3	8.63	—	
			1-1/2	1-3/8	1-3/8	2-7/16	2-3/8	2-3/8	3-1/16	8.87	—
		2-1/2	2	1-5/8	1-5/8	2-7/16	2-5/8	2-5/8	3-3/16	9.94	—
			2-1/2	1-15/16	1-15/16	2-3/8	2-7/8	2-7/8	3-5/16	10.95	—
		3	3	2-3/16	2-3/16	2-3/8	3-3/16	3-3/16	3-3/8	12	—
			4	2-11/16	2-11/16	2-1/2	3-11/16	3-11/16	3-1/2	14.25	—
		5	3-5/16	3-5/16	2-9/16	4-5/16	4-5/16	3-3/4	19.66	—	
			4	2-3/4	3	2-3/4	3-3/4	3-1/2	3-3/4	13.2	—
		4	1	4	2-3/4	2-15/16	2-3/4	3-3/4	3-1/2	13.52	—
				1-1/8	4	2-3/4	2-7/8	2-3/4	3-3/4	3-1/2	14.35
1-1/2	4		2-3/4	2-7/8	2-3/4	3-3/4	3-1/2	3-3/4	13.47	—	
	2		1-11/16	1-7/8	2-3/4	2-11/16	2-9/16	3-1/2	11.34	—	
2	2-1/2		1-7/8	1-7/8	2-5/8	2-15/16	2-13/16	3-9/16	11.6	—	
	3		2-1/4	2-7/16	2-11/16	3-1/4	3-1/8	3-5/8	13.44	—	
2-1/2	4	2-3/4	2-3/4	2-3/4	3-3/4	3-1/2	3-3/4	13.19	—		
	2-1/2	1-7/8	1-13/16	2-5/8	2-15/16	2-13/16	3-9/16	11.78	—		
3	3	2-1/4	2-1/8	2-11/16	3-1/4	3-1/8	3-5/8	13.06	—		
		2	2-3/4	2-3/4	2-3/4	3-3/4	3-5/8	3-3/4	15.75	—	
	5	3-3/8	3-1/2	2-13/16	4-3/8	4-3/8	4	22.37	—		
		1-1/8	15/16	15/16	2-5/8	2-5/16	2-1/4	3-5/16	9.7	—	
	2-1/2	1-1/2	1-7/16	1-7/16	2-11/16	2-7/16	2-3/8	3-5/16	10.2	—	
		2	1-11/16	1-9/16	2-3/4	2-11/16	2-9/16	3-1/2	10.21	10.67	
4	2-1/2	1-7/8	1-7/8	2-5/8	2-15/16	2-13/16	3-9/16	11.25	—		
		3	2-1/4	2-1/8	2-11/16	3-1/4	3-1/8	3-5/8	12.5	—	
	4	2-3/4	2-11/16	2-3/4	3-3/4	3-5/8	3-3/4	15.04	—		
		1-1/2	1-7/16	1-3/8	2-11/16	2-7/16	2-3/8	3-5/16	10.09	—	
	2-1/2	2	11/16	1-5/8	2-3/4	2-11/16	2-5/8	3-1/2	10.9	—	
		2-1/2	2	1-15/16	2-5/8	3	2-7/8	3-9/16	11.84	—	
	3-1/2	3	2-1/4	2-3/16	2-11/16	3-1/4	3-1/4	3-5/8	14.63	—	
		3-1/2	2-1/2	2-7/16	2-11/16	3-1/2	3-7/16	3-11/16	14.38	—	
	4	4	2-3/4	2-11/16	2-3/4	3-3/4	3-3/4	3-3/4	17.23	—	
		5	3-3/8	3-5/16	2-13/16	4-3/8	4-3/8	4	20.57	—	
	4	3/4	1-1/4	1-1/4	2-13/16	2-5/16	2-5/16	3-5/16	10.58	—	
			1	13/16	13/16	2-3/4	2-5/16	2-5/16	3-5/16	10.4	10.81
1-1/8		15/16	15/16	2-5/8	2-5/16	2-5/16	3-5/16	10.38	10.54		
		1-1/2	1-7/16	1-7/16	2-11/16	2-7/16	2-7/16	3-5/16	10.75	11.18	
2		2	1-11/16	1-11/16	2-3/4	2-11/16	2-11/16	3-1/2	11.63	11.73	
		2-1/2	2	2	2-5/8	2-15/16	2-15/16	3-9/16	12.85	12.96	
3	2-1/4	2-1/4	2-11/16	3-1/4	3-1/4	3-5/8	14.12	14.69			
	5	3-3/8	3-3/8	2-13/16	4-3/8	4-3/8	4	20.88	—		
6	3-7/8	3-7/8	2-7/8	4-15/16	4-15/16	4-1/16	26.36	—			



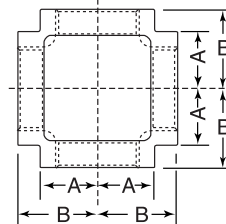
CAST IRON THREADED FITTINGS CLASS 125, (STANDARD)

Reducing Tee: Figure 359										
Size (NPS)		A	B	C	D	E	F	Wt. (lb)		
s	x	(in)	(in)	(in)	(in)	(in)	(in)	black	galv.	
2	5	3-5/16	3-9/16	3-5/16	4-1/2	4-1/4	4-1/2	22.41	—	
2-1/2	5	3-5/16	3-3/8	3-5/16	4-1/2	4-1/4	4-1/2	22.12	—	
3	4	2-3/16	2-3/16	3-3/8	4	3-3/4	4-3/8	23.53	—	
	6	3-13/16	4-1/16	3-3/8	5	5	4-5/8	31.13	—	
3-1/2	3	2-5/16	2-1/2	3-1/4	3-1/2	3-1/2	4-1/4	23.22	—	
	4	2-13/16	2-11/16	3-3/8	4	3-3/4	4-3/8	22.76	—	
	6	3-13/16	4	3-3/8	5	5	4-5/8	29.26	—	
5	4	2-1/2	2-1/16	2	3-3/16	3-3/16	3-1/16	4-1/4	21.81	—
		3	2-5/16	2-7/16	3-1/4	3-1/2	3-1/2	4-1/4	24.05	—
		4	2-13/16	2-3/4	3-3/8	4	3-3/4	4-3/8	20.58	—
		5	3-5/16	3-3/8	3-5/16	4-1/2	4-3/8	4-1/2	26.33	—
	5	6	3-13/16	3-7/8	3-3/8	5	5	4-5/8	33.51	—
		1-1/2	1-9/16	1-9/16	3-5/16	2-11/16	2-11/16	4	16.21	—
		2	1-3/4	1-3/4	3-7/16	2-15/16	2-15/16	4-1/8	17.43	—
		2-1/2	2-1/16	2-1/16	3-3/8	3-3/16	3-3/16	4-1/4	18.84	—
		3	2-5/16	2-5/16	3-1/4	3-1/2	3-1/2	4-1/4	20	—
		4	2-13/16	2-13/16	3-3/8	4	4	4-3/8	23.83	—
6	3-13/16	3-13/16	3-3/8	5	5	4-5/8	32.91	—		
	8	5-3/16	5-3/16	4-3/16	6-3/8	6-3/8	5-9/16	67.92	—	

Reducing Tee: Figure 359												
Size (NPS)		A	B	C	D	E	F	Wt. (lbs)				
s	x	(in)	(in)	(in)	(in)	(in)	(in)	black	galv.			
1-1/2	6	3-7/8	4-1/16	3-7/8	5-1/8	4-11/16	5-1/8	34.67	—			
2	6	3-7/8	4	3-7/8	5-1/8	4-11/16	5-1/8	35.21	—			
2-1/2	6	3-7/8	3-13/16	3-7/8	5-1/8	4-11/16	5-1/8	34.57	—			
3	4	2-13/16	3	3-7/8	4-1/16	4	4-15/16	32.25	—			
3-1/2	6	3-7/8	3-7/8	3-7/8	5-1/8	4-15/16	5-1/8	35.31	—			
4	3	2-5/16	2-1/2	3-7/8	3-9/16	3-9/16	4-13/16	31.75	—			
	4	2-7/8	2-15/16	3-7/8	4-1/16	4	4-15/16	30	—			
	6	3-7/8	3-7/8	3-7/8	5-1/8	4-15/16	5-1/8	34.22	—			
6	5	1-1/2	1-5/8	1-9/16	3-7/8	2-3/4	2-3/4	4-1/2	25.81	—		
		3-1/2	2-5/8	2-9/16	3-13/16	3-7/8	3-3/4	4-7/8	30.34	—		
		6	3-7/8	3-15/16	3-7/8	5-1/8	5-1/8	5-1/8	43.31	—		
		8	5-1/8	5-3/16	4-3/16	6-3/8	6-3/8	5-9/16	65.79	—		
6	6	1-1/8	1-3/8	1-3/8	3-13/16	2-5/8	2-5/8	4-7/16	22.36	—		
		2	1-13/16	1-13/16	3-7/8	3	3	4-5/8	24.65	—		
		2-1/2	2	2	3-13/16	3-1/4	3-1/4	4-3/4	25.67	27		
		3	2-3/8	2-3/8	3-13/16	3-9/16	3-9/16	4-13/16	27.46	28.56		
		4	2-7/8	2-7/8	3-7/8	4-1/16	4-1/16	4-15/16	32.44	33.74		
		5	3-3/8	3-3/8	3-13/16	4-5/8	4-5/8	5	37	—		
8	8	8	5-1/8	5-1/8	4-3/16	6-3/8	6-3/8	5-9/16	58.05	—		
		2	8	5-3/16	5-7/8	5-3/16	6-9/16	6-9/16	6-9/16	64	—	
		4	8	5-3/16	5-1/2	5-3/16	6-9/16	6-9/16	6-9/16	67	—	
		5	5	4-3/16	4-3/8	5-3/16	5-9/16	5-9/16	6-3/8	77.58	—	
		6	5	4-3/16	4-5/16	5-3/16	5-9/16	5-9/16	6-3/8	76.6	—	
			6	4-3/16	4-5/16	5-1/8	5-9/16	5-9/16	6-3/8	73.72	—	
			8	5-3/16	5-1/8	5-3/16	6-9/16	6-9/16	6-9/16	91.5	—	
		8	8	2	2-1/16	2-1/16	5-1/8	3-7/16	3-7/16	5-7/8	44.49	—
				2-1/2	2-5/16	2-5/16	5-1/16	3-11/16	3-11/16	6	45.23	—
				3	3-1/8	3-1/8	5-1/8	4-1/2	4-1/2	6-1/8	54.97	—
3-1/2	3-1/8			3-1/8	5-1/8	4-1/2	4-1/2	6-1/8	54.21	—		
4	3-1/8			3-1/8	5-1/8	4-1/2	4-1/2	6-1/8	53.62	—		
5	4-3/16			4-3/16	5-3/16	5-9/16	5-9/16	6-3/8	67.81	—		
6	4-3/16	4-3/16	5-1/8	5-9/16	5-9/16	6-3/8	66.22	—				

Most cast iron fittings are available in galvanized finish. Ask your salesperson for details and lead time.

Straight Cross
Figure 360



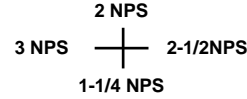
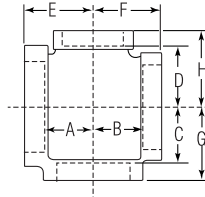
Size (NPS)	A (in)	B (in)	Weight (lbs) black
1/2	13/16	9/16	2.80
3/4	1-5/16	13/16	1.03
1	1-1/2	15/16	1.59
1-1/4	1-3/4	1-1/8	2.42
1-1/2	1-15/16	1-5/16	3.21
2	2-1/4	1-9/16	5.08

Size (NPS)	A (in)	B (in)	Weight (lbs) black
2-1/2	2-11/16	1-13/16	8.07
3	3-1/8	2-3/16	11.84
4	3-13/16	2-3/4	19.63
5	4-1/2	3-5/16	31.16
6	5-1/8	3-7/8	47.67



CAST IRON THREADED FITTINGS CLASS 125, (STANDARD)

Reducing Cross
Figure 361



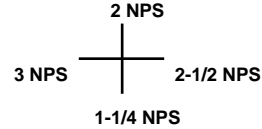
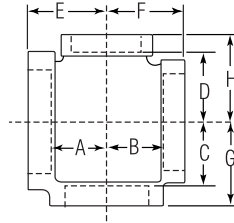
Read as:
3 x 2-1/2 x 2 x 1-1/4

Size (NPS)				A (in)	B (in)	C (in)	D (in)	E,F (in)	G,H (in)	Wt. (lbs) black	
1	1	3/4	3/4	13/16	13/16	15/16	15/16	1-3/8	1-7/16	1.30	
1-1/4	1-1/4	1	1	15/16	15/16	1-1/8	1-1/8	1-9/16	1-11/16	2.04	
1-1/2	1	1	1	1	1-1/8	1-1/4	1-1/4	1-5/8	1-13/16	2.74	
	1-1/4	1	1	1	1	1-1/4	1-1/4	1-5/8	1-13/16	2.67	
	1	1	1	1	1	1-1/4	1-1/4	1-5/8	1-13/16	2.51	
	1-1/2	1-1/4	1	1-1/8	1-1/8	13/16	15/16	1-13/16	1-7/8	3.90	
2	1-1/2	1	1	11/16	1-1/8	1-7/16	1-7/16	1-3/4	2	3.57	
		1-1/4	1	1-1/8	13/16	1-1/2	1-7/16	1-7/8	2-1/8	4.25	
		1-1/4	1-1/4	13/16	13/16	1-1/2	1-1/2	1-7/8	2-1/16	4.18	
	2	1	1	11/16	11/16	1-7/16	1-7/16	1-3/4	2	3.22	
		1-1/4	1-1/4	1-1/8	1-1/8	1-7/16	1-7/16	1-7/8	2-1/8	4.00	
		1-1/2	1-1/2	1-1/4	1-1/4	1-7/16	1-7/16	2	2-1/8	4.08	
2-1/2	1-1/2	1-1/4	1-1/4	1-1/8	13/16	1-13/16	1-13/16	2-1/16	2-3/8	6.01	
		1-1/2	1	15/16	1-9/16	1-7/8	1-13/16	2-3/16	2-7/16	6.51	
	2	1	1	1	11/16	1-13/16	1-13/16	1-15/16	2-5/16	5.11	
		1-1/4	1	1-1/8	13/16	1-13/16	1-13/16	2-1/6	2-3/8	5.86	
		1-1/4	1-1/4	1-1/8	13/16	1-13/16	1-13/16	2-1/16	2-3/8	5.88	
		1-1/2	1-1/2	1-1/4	15/16	1-7/8	1-7/8	2-3/16	2-7/16	6.13	
	2-1/2	2	2	1-1/2	1-3/4	1-7/8	1-7/8	2-7/16	2-9/16	7.23	
		1	1	1	1	1-13/16	1-13/16	1-15/16	2-5/16	5.06	
		1-1/4	1	13/16	13/16	1-3/4	1-13/16	2-1/16	2-3/8	5.39	
		1-1/4	1-1/4	1-1/8	1-1/8	1-13/16	1-13/16	2-1/16	2-3/8	5.26	
		1-1/2	1-1/2	1-1/4	1-1/4	1-13/16	1-13/16	2-3/16	2-7/16	5.56	
		1-1/2	1-1/2	1-1/4	1-1/4	1-7/8	1-7/8	2-3/16	2-7/16	5.68	
3	2-1/2	2	2	1-9/16	1-9/16	1-15/16	1-15/16	2-7/16	2-9/16	6.82	
		1	1	11/16	1-1/8	2-1/8	2-1/8	2-1/16	2-11/16	7.47	
		1-1/2	1-1/2	1-3/8	1-7/16	2-3/16	2-3/16	2-5/16	2-13/16	8.37	
	3	2	2	1-5/8	1-11/16	2-1/4	2-1/4	2-9/16	2-15/16	9.62	
		1	1	11/16	11/16	2-1/8	2-1/8	2-1/16	2-11/16	6.70	
		1-1/4	1-1/4	13/16	13/16	2-1/8	2-1/8	2-3/16	2-3/4	7.21	
		1-1/2	1-1/4	1-3/8	1-3/8	2-3/16	2-3/16	2-5/16	2-13/16	7.92	
			1-1/2	1-3/8	1-3/8	2-3/16	2-3/16	2-5/16	2-13/16	7.91	
		2	1-1/2	1-5/8	1-5/8	2-3/16	2-3/16	2-9/16	2-15/16	9.25	
			2	1-5/8	1-5/8	2-3/16	2-3/16	2-9/16	2-15/16	8.85	
3-1/2	3	2-1/2	2-1/2	1-7/8	1-7/8	2-3/16	2-3/16	2-13/16	3-1/16	9.96	
		1-1/2	1-1/2	1-3/8	1-7/16	2-7/16	2-7/16	2-3/8	3-1/16	10.28	
	3-1/2	2-1/2	2-1/2	1-7/8	1-15/16	2-7/16	2-7/8	2-7/8	3-5/16	13.07	
		1-1/4	1-1/4	1-1/4	1-1/4	2-3/8	2-3/8	2-1/4	3	9.09	
		1-1/2	1-1/4	1-3/8	1-3/8	2-7/16	2-7/16	2-3/8	3-1/16	9.75	
		1-1/2	1-1/2	1-3/8	1-7/16	2-11/16	2-5.8	2-7/16	3-5/16	13.50	
4	3	2	2	1-5/8	1-11/16	2-13/16	2-13/16	2-11/16	3-1/2	13.50	
	3-1/2	1-1/4	1-1/4	1-1/4	15/16	2-11/16	2-11/16	2-5/16	3-5/16	11.47	
	4	1	1	1-1/4	1-1/4	2-3/4	2-3/4	2-5/16	3-5/16	11.09	
		1-1/4	1-1/4	1-1/4	1-1/4	2-11/16	2-11/16	2-5/16	3-5/16	10.75	
		1-1/2	1-1/2	1-3/8	1-3/8	2-11/16	2-11/16	2-7/16	3-5/16	11.82	
		2-1/2	1-1/2	2	2	2-7/8	2-11/16	2-11/16	2-15/16	3-9/16	14.38
			2	1-7/8	1-7/8	2-11/16	2-7/8	2-15/16	3-9/16	14.88	
		3	3	2-3/16	2-3/16	2-11/16	2-11/16	3-1/4	3-5/8	15.51	
	3-1/2	3-1/2	2-11/16	2-11/16	2-3/4	2-3/4	3-3/4	3-3/4	21.44		
	4	2	1-11/16	1-11/16	2-11/16	2-11/16	2-3/4	3-7/16	12.00		



CAST IRON THREADED FITTINGS CLASS 125, (STANDARD)

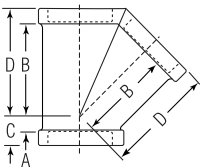
Reducing Cross
Figure 361



Read as:
3 x 2-1/2 x 2 x 1-1/4

Size (NPS)			A (in)	B (in)	C (in)	D (in)	E,F (in)	G,H (in)	Wt. (lbs) black	
5	4	1-1/2	1-1/2	1-1/2	1-5/8	3-3/8	3-3/8	2-11/16	4	18.81
		2-1/2	2	2	2-1/8	3-5/16	3-9/16	3-3/16	4-1/4	22.47
	5	2	2	1-3/4	1-3/4	3-7/16	3-7/16	2-15/16	4-1/8	18.25
		3	3	2-5/16	2-5/16	3-5/16	3-5/16	3-1/2	4-5/16	22.91
6	5	1-1/2	1-1/2	1-1/2	1-9/16	3-7/8	3-7/8	2-3/4	4-1/2	25.75
		2	2	1-3/4	1-13/16	3-15/16	3-15/16	3	4-5/8	28.44
		3	3	2-5/16	2-3/8	3-7/8	3-7/8	3-9/16	4-13/16	32.88
	6	1-1/4	1-1/4	1-3/8	1-3/8	3-13/16	3-13/16	2-5/8	4-7/16	22.88
		2-1/2	2-1/2	2	2	3-7/8	3-7/8	3-1/4	4-3/4	26.44
		4	4	2-13/16	2-13/16	3-7/8	3-7/8	4-1/16	4-15/16	33.4
8	8	5	5	4-3/16	4-3/16	5-3/16	5-3/16	5-9/16	6-3/8	80.44

Lateral
Figure 373



Size (NPS)	A (in)	B (in)	C (in)	D (in)	Weight (lbs) black
3/4	1/4	1-3/4	3/4	2-1/4	1.00
1	3/16	2-3/16	3/4	2-3/4	1.62
1-1/4	3/8	2-5/8	1	3-1/4	2.63
1-1/2	7/16	3-3/16	1-1/16	3-13/16	3.57
2	9/16	3-13/16	1-1/4	4-1/2	5.75
2-1/2	5/8	4-5/16	1-1/2	5-3/16	8.99
3	13/16	5-3/16	1-3/4	6-1/8	13.54
4	1-1/16	6-9/16	2-1/8	7-5/8	21.30

Return Bends
Open
Figure 376



Size (NPS)	Center to Center (in)	Weight (lbs) black
1/2	1-1/2	—
3/4	1-7/8	.98
1	2-1/2	1.48
1-1/4	3	2.41
1-1/2	3-1/2	3.33

Special Wide Pattern
Figure 377



Size (NPS)	Center to Center (in)	Weight (lbs)	
		black	galv.
1	4	2.20	•
1-1/4	4	3.50	•
1-1/4	6	3.74	•

*Not Stocked

Return Bends
Close Pattern, R.H.
Figure 375



Size (NPS)	Center to Center (in)	Weight (lbs) black
1/2	1-1/4	.65
3/4	1-1/2	1.10
1	1-3/4	1.71
1-1/4	2-1/4	2.39
1-1/2	2-1/2	3.46



CAST IRON THREADED FITTINGS CLASS 125, (STANDARD)

Flange Union
Gasket Type
Figure 487

Assembled with gaskets

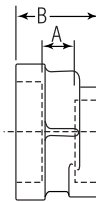


Size (NPS)	Diam. of Flanges (in)	No. of bolts	Weight (lbs)	
			black	galv.
1/2	2-15/16	3	1.75	1.80
3/4	3	3	2.00	2.05
1	3-1/4	3	2.25	2.30
1-1/4	4-3/16	4	4.75	4.85
1-1/2	4-3/8	4	5.00	5.10
2	5	4	6.50	6.65
2-1/2	5-5/8	4	8.50	8.65
3	6-3/8	4	11.00	11.20
3-1/2	6-7/8	4	12.75	13.00
4	7-11/16	5	18.00	18.50
5	8-15/16	5	22.00	22.75
6	10-1/4	6	30.00	31.00
8	12-15/16	8	51.00	52.50

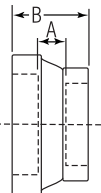
Eccentric Reducer
Figure 368



Size (NPS)	A (in)	B (in)	Weight (lbs)		
			black	galv.	
3/4	1/2	9/16	1-1/2	.45	—
1	1/2	1/2	1-7/16	.57	—
	3/4	7/16	1-1/2	.61	—
1-1/4	1/2	9/16	1-5/8	1.00	—
	3/4	1/2	1-5/8	.90	—
	1	1/2	1-11/16	1.00	—
1-1/2	1/2	11/16	1-3/4	1.11	—
	3/4	9/16	1-11/16	1.17	—
	1	9/16	1-3/4	1.21	—
	1-1/4	5/8	1-7/8	1.26	—
2	1/2	3/4	1-15/16	1.80	—
	3/4	3/4	2	1.83	—
	1	11/16	2-1/16	1.86	—
	1-1/4	13/16	2-1/8	1.87	—
2-1/2	1-1/2	7/8	2-3/16	1.93	—
	1	13/16	2-1/4	2.74	—
	1-1/4	7/8	2-3/8	2.80	—
	1-1/2	7/8	2-3/8	2.94	—
	2	1	2-9/16	2.95	—
3	1	7/8	2-7/16	3.95	—
	1-1/4	15/16	2-9/16	3.80	—
	1-1/2	15/16	2-9/16	4.16	—
	2	1-1/16	2-3/4	4.61	—
3-1/2	2-1/2	15/16	2-13/16	4.80	—
	2	1-1/16	2-3/4	5.23	—
4	3	15/16	2-15/16	6.04	—
	1	1-1/16	2-11/16	6.83	—
	1-1/4	1-1/16	2-3/4	6.58	—
	1-1/2	1-1/8	2-13/16	6.61	—
	2	1-3/16	2-15/16	6.91	—
	2-1/2	1-1/8	3-1/16	7.26	—
	3	1-1/16	3-1/8	7.64	—
5	2-1/2	1-1/8	3-3/16	11.38	—
	3	1-1/16	3-1/4	11.44	—
6	4	1-1/16	3-5/16	11.19	—
	3	1-1/16	3-5/16	14.66	—
8	4	1-1/8	3-7/16	15.36	—
	5	1-1/8	3-9/16	18.00	—
	5	1-5/16	3-3/4	28.14	—
	6	1-1/4	3-7/8	28.04	—



Concentric Reducers
Figure 367



Size (NPS)	A (in)	B (in)	Weight (lbs) black	
3/4	1/2	5/8	1-9/16	.40
1	1/2	11/16	1-11/16	.54
	3/4	7/16	1-1/2	.63
1-1/4	1/2	9/16	1-5/8	.84
	3/4	1	2-1/8	1.07
1-1/2	1	15/16	2-1/8	1.07
	1/2	1/2	1-5/8	1.00
	3/4	1/2	1-5/8	1.20
	1	1/2	1-3/4	1.50
2	1-1/4	1	2-1/4	1.45
	1/2	5/8	2	2.00
	3/4	3/4	2	1.90
	1	3/4	2	1.83
2-1/2	1-1/4	13/16	2-1/8	1.78
	1-1/2	7/8	2-3/16	1.98
	1-1/2	3/4	2	3.10
3	2	1	2-9/16	2.98
	3/4	15/16	2-1/2	4.31
	2	1-1/16	2-3/4	3.96
4	2-1/2	15/16	2-13/16	4.40
	2	1-3/16	2-15/16	6.50
	2-1/2	1-3/16	3-1/8	7.78
5	3	1-1/16	3-1/8	7.01
	4	1-1/16	3-5/16	10.48
6	4	1-1/8	3-7/16	13.83
	5	1-1/8	3-9/16	15.53
8	6	1-1/4	3-7/8	29.10

Orders we receive for UPS delivery by 3:30 P.M. will be shipped the same day. Ask your salesperson for other delivery options.



CAST IRON THREADED FITTINGS CLASS 125, (STANDARD)

Hex Bushing
Figure 383

Size (NPS)		Weight (lbs)	
		black	galv.
1/4	1/8	.021	.022
3/8	1/8	.045	.047
	1/4	.038	.039
1/2	1/8	.060	.062
	1/4	.070	.073
	3/8	.050	.053
3/4	1/8	.090	.093
	1/4	.100	.105
	3/8	.119	.121
	1/2	.103	.105
1	1/8	.208	.216
	1/4	.186	.192
	3/8	.182	.188
	1/2	.215	.220
1-1/4	3/4	.170	.174
	1/4	.290	.300
	3/8	.290	.295
	1/2	.300	.305
1-1/2	3/4	.385	.393
	1	.296	.302
	1/4	.470	.490
	3/8	.470	.500
	1/2	.420	.470
2	3/4	.470	.500
	1	.500	.520
	1-1/4	.327	.334
	1-1/4	.810	.830
	1-1/2	.667	.680
2-1/2	1/4	.750	.800
	3/8	.750	.780
	1/2	.770	.780
	3/4	.710	.750
	1	.730	.760
	1-1/4	.810	.830
3	1/2	1.280	—
	3/4	1.250	1.290
	1	1.160	1.230
	1-1/4	1.240	1.250
	1-1/2	1.290	1.340
	2	.920	.950
3-1/2	1/2	1.93	2.01
	3/4	1.92	1.95
	1	1.90	1.92
	1-1/4	1.77	1.80
	1-1/2	1.79	1.83
	2	1.90	1.94
4	2-1/2	1.63	1.66
	1	2.65	2.75
	1-1/4	2.54	2.64
	1-1/2	2.32	2.38
	2	2.42	2.48
	2-1/2	2.56	2.61
5	3	1.96	1.98
	1	3.59	3.63
	1-1/4	3.54	3.60
	1-1/2	3.44	3.50
	2	3.11	3.24
	2-1/2	3.29	3.33
6	3	3.15	3.21
	3-1/2	2.50	2.58



Hex Bushing
Figure 383

Continued from previous column.

Size (NPS)		Weight (lbs)	
		black	galv.
5	2	5.12	5.24
	2-1/4	4.87	5.06
	3	4.83	4.93
	3-1/2	4.00	4.30
6	4	3.94	4.10
	2	8.00	8.32
	2-1/2	7.72	7.78
	3	7.75	8.06
	3-1/2	7.13	7.40
8	4	6.83	7.11
	5	5.24	5.45
	3	15.50	15.8
	4	13.93	15.0
10	5	13.65	14.0
	6	13.19	13.5
	4	27.5	—
12	5	—	—
	6	24.5	—
	8	22.0	—
12	4	32.5	—
	10	32.5	33.0

Face Bushing
Figure 385



Size (NPS)		Weight (lbs)	
		black	galv.
1/4	1/8	.009	—
3/8	1/4	.015	—
1/2	1/4	.040	—
	3/8	.030	—
3/4	3/8	.065	.065
	1/2	.055	.055
1	1/2	.120	.125
	3/4	.085	.090
1-1/4	1/2	.245	—
	3/4	.268	—
1-1/2	1	.160	.165
	1/2	.320	.330
	3/4	.391	.398
	1	.339	.346
2	1-1/4	.145	.150
	1/2	.695	—
	1	.525	.535
	1-1/4	.540	.549
2-1/2	1-1/2	.345	.350
	1-1/4	.935	.960
	1-1/2	.850	.870
3	2	.615	.620
	1-1/4	1.540	—
	1-1/2	1.500	1.560
	2	1.330	1.380
3-1/2	2-1/2	.970	1.020
	2-1/2	1.760	—

Note: Hexagon head or octagon head bushings 2-1/2 NPS and smaller reducing one size may be made of malleable iron, ductile iron or steel. Other sizes may be made of cast iron, ductile iron, malleable iron or steel. Face bushing 2-1/2 NPS and smaller may be made of malleable iron ductile iron or steel. Face bushings 3 NPS and larger reducing one size may be made of malleable iron, ductile iron or steel. Face bushings 3 NPS and larger reducing two sizes or more may be made of cast or malleable iron, ductile iron, or steel. According to specifications, hex bushings and cored plugs should be used with 150# malleable iron and 125# cast iron. Solid plugs and face bushings should be used with #250 and #300 fittings.



CAST IRON THREADED FITTINGS CLASS 125, (STANDARD)

Square Head Plugs (Cored)
Figure 387



Size (NPS)	Weight (lbs)	
	black	galv.
1/2	—	—
3/4	.132	.135
1	.250	.281
1-1/4	.391	.407
1-1/2	.500	.515
2	.815	.833
2-1/2	1.320	1.340
3	1.870	1.910
3-1/2	2.500	2.600
4	4.00	4.000

Countersunk Plugs
Figure 390



Size (NPS)	Weight (lbs)	
	black	galv.
1/2	.050	.053
3/4	.090	.100
1	.195	.200
1-1/4	.320	.340
1-1/2	.470	.480
2	.840	1.3
2-1/2	1.400	2.0
3	2.250	3.0
3-1/2	3.020	—
4	3.760	3.9

Square Head Plugs (Solid)
Figure 388



Size (NPS)	Weight (lbs)	
	black	galv.
1/2	.100	.104
3/4	.169	.175
1	.320	.333
1-1/4	.531	.546
1-1/2	.760	.770
2	1.230	1.250
2-1/2	2.000	2.080
3	3.180	3.310
3-1/2	4.380	—

Cap
Figure 381



Size (NPS)	Weight (lbs)	
	black	galv.
2-1/2	2.55	—
3	4.10	—
4	6.40	—
5	10.70	—
6	14.20	14.60
8	27.23	28.35

Locknut
Figure 370



Size (NPS)	Min. Dimensions				Weight (lbs)	
	A (in)	B (in)	C (in)	D (in)	blk.	galv.
2-1/2	3.500	3.180	.590	.090	1.13	1.16
3	4.270	3.840	.670	.090	1.60	1.70
4	5.380	5.000	.800	.130	3.50	—

Bar Plugs (Cored)
Figure 389



Size (NPS)	Weight (lbs)	
	black	galv.
4	3.82	3.97
5	6.50	6.83
6	9.94	10.34
8	20.26	21.00

Bar Plugs (Cored)
Figure 380

Size (NPS)	Weight (lbs)	
	black	galv.
4	5.68	—
5	9.60	—
6	14.78	—
8	—	—

Floor Flange
Bolt Holes Cored
Figure 1006

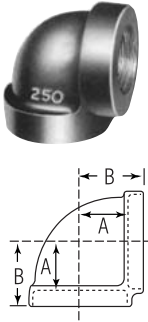


Size (NPS)	dia. of flange (in)	no. of holes	dia. of holes (in)	Weight (lbs)	
				black	galv.
1/4	2-13/16	4	1/4	.39	.40
3/8	3	4	1/4	.43	.45
1/2	3-1/2	4	1/4	.73	.74
3/4	3-1/2	4	1/4	.80	.81
1	4	4	1/4	1.13	1.14
1-1/4	4	4	1/4	1.14	1.15
1-1/2	4-1/2	4	5/16	1.55	1.56
2	5-1/2	4	5/16	2.40	2.43

We also stock hex head and magnetic pipe plugs. Your salesperson will be happy to fulfill your requirements.

ANVIL™ CAST IRON THREADED FITTINGS CLASS 250 (EXTRA HEAVY)

90° Elbow
Figure 421



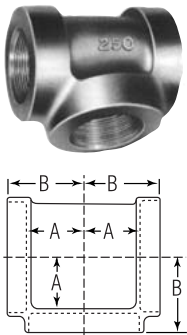
Size (NPS)	A (in)	B (in)	Weight (lbs) black
1/4	5/8	15/16	.37
3/8	11/16	1-1/16	.50
1/2	13/16	1-1/4	.75
3/4	15/16	1-7/16	1.13
1	1-1/16	1-5/8	1.79
1-1/4	1-5/16	1-15/16	3.00
1-1/2	1-1/2	2-1/8	4.05
2	1-13/16	2-1/2	6.76
2-1/2	2	2-15/16	10.56
3	2-3/8	3-3/8	15.25
3-1/2	2-3/4	3-3/4	20.20
4	3-1/16	4-1/8	26.15
8	5-5/8	7	122.00

45° Elbow
Figure 424



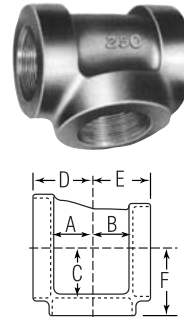
Size (NPS)	A (in)	B (in)	Weight (lbs) black
1/2	9/16	1	.66
3/4	5/8	1-1/8	1.04
1	3/4	1-5/16	1.56
1-1/4	7/8	1-1/2	2.70
1-1/2	1-1/16	1-11/16	3.55
2	1-5/16	2	6.07
2-1/2	1-5/16	2-1/4	9.79
3	1-9/16	2-1/2	13.83
4	1-3/4	2-13/16	22.60
6	2-1/4	3-1/2	50.20

Straight Tee
Figure 425

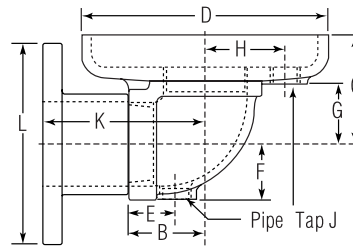


Size (NPS)	A (in)	B (in)	Weight (lbs) black
1/4	5/8	15/16	.47
3/8	11/16	1-1/16	.70
1/2	3/4	1-1/4	1.20
3/4	7/8	1-7/16	1.57
1	1	1-5/8	2.43
1-1/4	1-3/16	1-15/16	3.94
1-1/2	1-7/16	2-1/8	5.31
2	1-3/4	2-1/2	9.01
2-1/2	1-15/16	2-15/16	14.23
3	2-5/16	3-3/8	20.95
4	2-15/16	4-1/8	33.98

Reducing Tee
Figure 426



Size (NPS)	A,B (in)	C (in)	D,E (in)	F (in)	Weight (lbs) black	
3/4	3/4	3/4	7/8	1-5/16	1-3/8	1.37
1	1/2	3/4	1	1-3/8	1-1/2	2.03
	3/4	7/8	1	1-1/2	1-9/16	2.19
1-1/4	3/4	15/16	1-1/8	1-5/8	1-11/16	3.21
	1	1-1/16	1-3/16	1-3/4	1-13/16	3.49
1-1/2	1-1/4	1-5/16	1-3/8	2	2-1/16	4.98
	1	1-1/8	1-5/16	1-13/16	1-15/16	4.26
1-1/2	3/4	1	1-1/4	1-11/16	1-7/8	4.02
	1-1/2	1-1/2	1-5/8	2-5/16	2-5/16	7.69
2	3/4	1-1/8	1-7/16	1-7/8	2	6.24
	1	1-1/4	1-1/2	2	2-1/8	6.57
	1-1/4	1-3/8	1-9/16	2-3/16	2-1/4	7.11



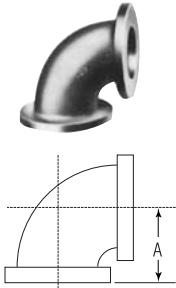
Safety valve discharge Elbow—Cast iron
Threaded inlet: Figure 1538
Flanged inlet: Figure 1538F

Elbow Pipe Size (NPS)	Riser Pipe Size A (in)	B (in)	C (in)	D (in)	E (in)	F (in)	G (in)	H (in)	J (in)	K (in)	L (in)	Weight Figure 1538	Weight Figure 1538F
2-1/2	3-1/2	2-11/16	4-5/16	8-1/2	1-5/8	1-15/16	2-1/8	2-3/4	3/4	—	—	12.00	—
3	4	3-1/8	4-7/8	9-1/2	1-5/8	2-5/16	2-9/16	3-1/8	3/4	—	—	15.00	—
3-1/2	5	3-7/16	5-5/16	10-1/4	1-3/4	2-5/8	2-7/8	3-7/16	3/4	—	—	24.00	—
4	5	3-3/4	5-3/4	11	1-3/4	2-15/16	3-3/16	3-3/4	3/4	—	—	27.00	—
5	6	4-1/2	6-3/4	12-1/2	1-7/8	3-9/16	3-15/16	4-3/8	3/4	—	—	40.00	—
6	8	5-1/8	7-5/8	13-3/4	2	4-3/16	4-9/16	5	3/4	—	—	53.00	—
8	10	6-9/16	8-9/16	17	2-3/8	5-3/8	5-15/16	6-3/8	1	10-3/4	13-1/2	104.00	140.00



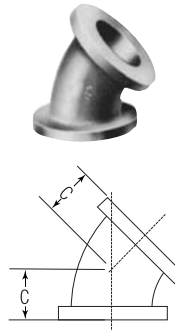
CAST IRON FLANGED FITTINGS CLASS 125, STANDARD

90° Straight Elbow
Figure 801



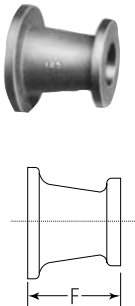
Size (NPS)	A (in)	Flange Diam. (in)	Thickness		Weight (lbs)
			Min. Flange (in)	Wall (in)	
1-1/2	4	5	9/16	5/16	9
2	4-1/2	6	5/8	5/16	14
2-1/2	5	7	11/16	5/16	19
3	5-1/2	7-1/2	3/4	3/8	24
3-1/2	6	8-1/2	13/16	7/16	31
4	6-1/2	9	15/16	1/2	41
5	7-1/2	10	15/16	1/2	52
6	8	11	1	9/16	68
8	9	13-1/2	1-1/8	5/8	110
10	11	16	1-3/16	3/4	175
12	12	19	1-1/4	13/16	250

45° Straight Elbow
Figure 802



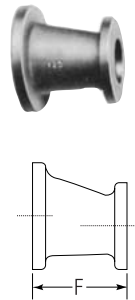
Size (NPS)	A (in)	Flange Diam. (in)	Thickness		Weight (lbs)
			Min. Flange (in)	Wall (in)	
1-1/2	2-1/4	5	9/16	5/16	8
2	2-1/2	6	5/8	5/16	12
2-1/2	3	7	11/16	5/16	17
3	3	7-1/2	3/4	3/8	20
3-1/2	3-1/2	8-1/2	13/16	7/16	27
4	4	9	15/16	1/2	36
5	4-1/2	10	15/16	1/2	45
6	5	11	1	9/16	60
8	5-1/2	13-1/2	1-1/8	5/8	94
10	6-1/2	16	1-3/16	3/4	145
12	7-1/2	19	1-1/4	13/16	220

Concentric Reducer
Figure 825



Size (NPS)	F (in)	Weight (lbs)
2	1-1/2	12
2-1/2	1-1/2	14
	2-1/2	12
3	1-1/2	14
	2	16
	2-1/2	19
4	2	24
	2-1/2	26
	3	28
	3-1/2	31
5	2-1/2	31
	3	32
	4	39
6	2	34
	2-1/2	37
	3	39
	4	47
	5	50
8	4	66
	5	71
	6	77
10	4	85
	5	90
	6	100
12	8	120
	6	140
	8	155
12	10	180

Eccentric Reducer
Figure 826



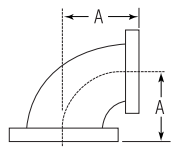
Size (NPS)	F (in)	Weight (lbs)
3	2	16
	2-1/2	22
4	2	28
	2-1/2	28
	3	28
5	4	39
6	3	47
	4	50
	5	51
8	4	71
	5	76
	6	77
10	6	107
	8	120
12	8	155
	10	180

Special finishes are available for flanged cast iron fittings including epoxy coating and hot dip galvanized. Ask us for price and availability.



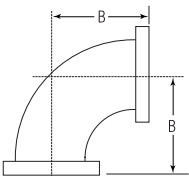
CAST IRON FLANGED FITTINGS CLASS 125, STANDARD

Taper Reducing Elbow
Figure 803



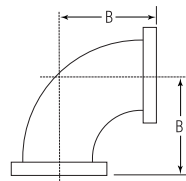
Size (NPS)		A (in)	Weight (lbs)
2-1/2	2	5	18
3	2	5-1/2	19
	2-1/2		22
4	2	6-1/2	29
	2-1/2		31
	3		33
5	3	7-1/2	40
	4		48
6	3	8	47
	4		56
	5		60
8	4	9	77
	5		82
	6		90
10	6	11	125
	8		150
12	6	12	165
	8		190
	10		220

Long Radius Elbow
Straight
Figure 804



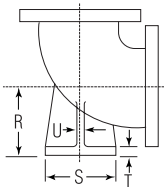
Size (NPS)	B (in)	Flange Diam. (in)	Thickness		Weight (lbs)
			Flange (min.) (in)	Wall (in)	
2	6-1/2	6	5/8	5/16	16
2-1/2	7	7	11/16	5/16	23
3	7-3/4	7-1/2	3/4	3/8	28
4	9	9	15/16	1/2	48
6	11-1/2	11	1	9/16	85
8	14	13-1/2	1-1/8	5/8	145
10	16-1/2	16	1-3/16	3/4	230
12	19	19	1-1/4	13/16	350

Long Radius Elbow
Reducing
Figure 804R



Reducing Size (NPS)	B (in)	Weight (lbs)
3 x 2	7-3/4	23
4 x 3	9	46
5 x 4	10-1/4	58
6 x 4	11-1/2	78
6 x 5		81
8 x 6	14	130
10 x 8	16-1/2	205

Base Elbow
Figure 805



Size (NPS)	Center to Base R (in)	Dia. of Round Base S (in)	Thickness		Size of Supporting Pipe for Base (in)	Weight (lbs)
			Base T (in)	Rubs U (in)		
3	4-7/8	5	9/16	1/2	2	36
4	5-1/2	6	5/8	1/2	2	59
5	6-1/4	7	11/16	5/8	2-1/2	76
6	7	7	11/16	5/8	2-1/2	110
8	8-3/8	9	15/16	7/8	4	158
10	9-3/4	9	15/16	7/8	4	224
12	11-1/4	11	1	1	6	324

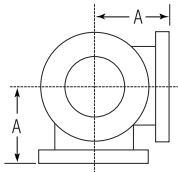
Bases, when drilled, should be drilled to the template of the flange of the supporting pipe size.
Size of base determined by size of largest opening of fitting.

Bases will be furnished not faced and not drilled unless otherwise specified. When ordered faced, dimensions "R" and "T" will be slightly less than shown in table.



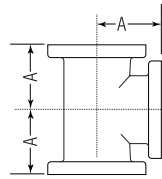
CAST IRON FLANGED FITTINGS CLASS 125, STANDARD

Side Outlet
Elbow
Figure 808



Size (NPS)	A (in)	Flange Diam. (in)	Thickness		Weight (lbs)
			Flange (in)	Wall (in)	
4	6-1/2	9	15/16	1/2	59
6	8	11	1	9/16	96
8	9	13-1/2	1-1/8	5/8	150

Straight Tee
Figure 811



Size (NPS)	A (in)	AA (in)	Flange Dia. (in)	Thickness		Weight (lbs)
				Flange (in)	Wall (in)	
1-1/2	4	8	5	9/16	5/16	15
2	4-1/2	9	6	5/8	5/16	21
2-1/2	5	10	7	11/16	5/16	30
3	5-1/2	11	7-1/2	3/4	3/8	37
4	6-1/2	13	9	15/16	1/2	64
5	7-1/2	15	10	15/16	1/2	81
6	8	16	11	1	9/16	105
8	9	18	13-1/2	1-1/8	5/8	165
10	11	22	16	1-3/16	3/4	270
12	12	24	19	1-1/4	13/16	380

Reducing Tee: Figure 812



6 NPS
4 NPS
5 NPS
Read as:
6 x 5 x 4

Size (NPS)			Weight (lbs)	
2-1/2	2-1/2	2	28	
3	2-1/2	2	33	
		3	35	
	3	2	34	
		1-1/2	32	
		2-1/2	35	
		4	56	
4	2-1/2	2	49	
		4	56	
	3	3	53	
		4	59	
	4	4	1-1/2	50
			2	51
			2-1/2	56
		4	3	57
			6	88
			4	73
5	4	5	80	
		2-1/2	66	
	5	3	71	
		4	80	
		6	102	
		4	73	

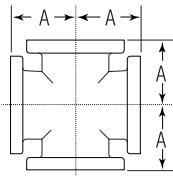
Size (NPS)	Weight (lbs)		
	2	3	
2	6	83	
	3	80	
	3	4	85
		6	91
		3	86
	4	4	88
6		94	
4		91	
5		102	
6		2	86
		2-1/2	90
	3	92	
	4	97	
	5	105	
	8	142	
6	4	140	
	8	146	
	5	8	149
		4	125
	6	6	144
		8	159
8		3	140
		4	143
	5	149	
	6	156	
10	10	235	
	12	275	

Size (NPS)	Weight (lbs)		
	6	8	
6	6	342	
	8	220	
	8	8	232
		10	262
		3	218
	10	4	225
5		235	
6		240	
8		262	
12		340	
10		8	298
	12	340	
	12	6	310
		8	320
		10	340
		12	365
12	4	291	
	5	295	
	6	323	
	8	330	
	10	362	



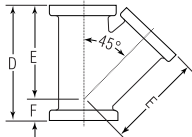
CAST IRON FLANGED FITTINGS CLASS 125, STANDARD

**Cross
Figure 821**



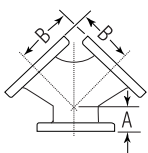
Size (NPS)	A (in)	AA (in)	Flange Diameter (in)	Min. Flange Thickness (in)	Wall Thickness (in)	Weight (lbs)
2	4-1/2	9	6	5/8	5/16	28
2-1/2	5	10	7	11/16	5/16	39
3	5-1/2	11	7-1/2	3/4	3/8	48
4	6-1/2	13	9	15/16	1/2	82
5	7-1/2	15	10	15/16	1/2	105
6	8	16	11	1	9/16	135
8	9	18	13-1/2	1-1/8	5/8	210
10	11	22	16	1-3/16	3/4	330
12	12	24	19	1-1/4	13/16	470

**Lateral
Figure 823**



Size (NPS)	Face to Face D (in)	Center to Face E (in)	Center to Face F (in)	Flange Diameter (in)	Min. Flange Thickness (in)	Wall Thickness (in)	Weight (lbs)
2	10-1/2	8	2-1/2	6	5/8	5/16	25
2-1/2	12	9-1/2	2-1/2	7	11/16	5/16	36
3	13	10	3	7-1/2	3/4	3/8	44
4	15	12	3	9	15/16	1/2	75
5	17	13-1/2	3-1/2	10	15/16	1/2	96
6	18	14-1/2	3-1/2	11	1	9/16	125
8	22	17-1/2	4-1/2	13-1/2	1-1/8	5/8	210

**True Y
Figure 810**



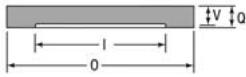
Size (NPS)	A (in)	B (in)	Flange Diameter (in)	Min. Flange Thickness (in)	Wall Thickness (in)	Weight (lbs)
4	3	6-1/2	9	15/16	1/2	60
6	3-1/2	8	11	1	9/16	101
8	4-1/2	9	13-1/2	11/16	5/8	154



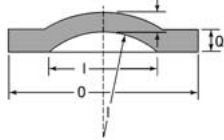
IRON FLANGES CLASS 125, STANDARD

Blind Flange Cast Iron: Figure 1018

10 x 16 (NPS) and smaller



12 x 9 (NPS) and larger



Pipe Size I (NPS)	Diam. of Flange O (NPS)	Min. Flange Thickness Q (in)	Wall Thick. V (in)	Weight (lbs) Cast Iron
1	4-1/4	7/16	3/8	2.00
1-1/4	4-5/8	1/2	7/16	2.25
1-1/2	5	9/16	1/2	3.75
2	6	5/8	9/16	4.00
2-1/2	7	11/16	5/8	6.75
3	7-1/2	3/4	11/16	8.00
3-1/2	8-1/2	13/16	3/4	11.00
4	9	15/16	7/8	14.00
5	10	15/16	7/8	18.00
6	11	1	15/16	23.00
8	13-1/2	1-1/8	1-1/16	40.00
10	16	1-3/16	1-1/8	59.00
12	19	1-1/4	13/16	88.00
14 O.D.	21	1-3/8	7/8	115.00
16 O.D.	23-1/2	1-7/16	1	160.00
18 O.D.	25	1-9/16	1-1/16	190.00
20 O.D.	27-1/2	1-11/16	1-1/8	250.00
24 O.D.	32	1-7/8	1-1/4	370.00

All standard blind flanges sizes 12 NPS (19 inch O.D.) and larger must be dished with inside radius equal to the port diameter. When ordering blind flanges always give outside diameter. H All Class 125 cast iron standard flanges have a flat face.

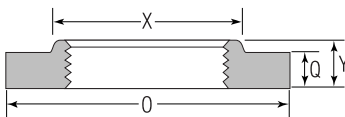
Companion Flange Cast Iron: Figure 1011 Malleable: Figure 1035



Showing Hub



Showing Plain



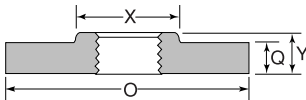
Pipe Size (NPS)	Diam. of Flange O (in)	Min. Flange Thickness Q (in)	Min. Diam. of Hub X (in)	Min. Length Through Hub Y (in)	Weight (lbs)	
					Cast Iron	Malleable
3/4	3-7/8	7/16	1-3/4	5/8	1.50	—
1	4-1/4	7/16	1-15/16	11/16	1.75	—
1-1/4	4-5/8	1/2	2-5/16	13/16	2.00	—
1-1/2	5	9/16	2-9/16	7/8	2.25	2.25
2	6	5/8	3-1/16	1	4.00	4.00
2-1/2	7	11/16	3-9/16	1-1/8	6.00	6.00
3	7-1/2	3/4	4-1/4	1-3/16	7.63	7.63
3-1/2	8-1/2	13/16	4-13/16	1-1/4	9.00	—
4	9	15/16	5-5/16	1-5/16	11.75	11.75
5	10	15/16	6-7/16	1-7/16	14.00	14.00
6	11	1	7-9/16	1-9/16	16.50	16.50
8	13-1/2	1-1/8	9-11/16	1-3/4	26.00	26.00
10	16	1-3/16	11-15/16	1-15/16	37.75	—
12	19	1-1/4	14-1/16	2-3/16	50.50	—
14 O.D.	21	1-3/8	15-5/8	2-1/4	80.00	—
16 O.D.	23-1/2	1-7/16	17-1/2	2-1/2	100.00	—
18 O.D.	25	1-9/16	19-5/8	2-11/16	106.00	—
20 O.D.	27-1/2	1-11/16	21-3/4	2-7/8	128.00	—
24 O.D.	32	1-7/8	26	3-1/4	202.00	—

When ordering companion flanges always give outside diameter as well as nominal pipe size.



IRON FLANGES CLASS 125, STANDARD

Reducing Companion Flange
 Cast iron: Figure 1016



To order reducing companion flanges, specify threaded or reduced size first, then the outside diameter of desired flange. For instance, if a reducing flange is required to connect a 5 NPS pipe to an 8 NPS valve or fitting having a 13-1/2 inch/345 O.D. flange, order 5 NPS x 13-1/2 inch reducing flange.

ΔStock galvanized

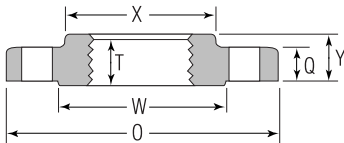
Pipe Size (NPS)	Flange Diameter O (in)	Min. Flange Thickness Q (in)	Min. Diam of Hub X (in)	Min. Length Thru Hub Y (in)	Weight Cast Iron (lbs)
1	5	9/16	1-15/16	11/16	2.75Δ
1-1/4			2-5/16	13/16	2.50Δ
1	6	5/8	1-15/16	11/16	5.00Δ
1-1/4			2-5/16	13/16	4.75Δ
1-1/2			2-9/16	7/8	4.50Δ
1-1/2	7	1-1/16	2-9/16	7/8	7.00Δ
2			3-1/16	1	6.75Δ
1	7-1/2	3/4	1-15/16	13/16	9.00
1-1/2			2-9/16	7/8	8.75Δ
2			3-1/16	1	8.50Δ
2-1/2	8-1/2	1-3/16	3-9/16	1-1/8	8.00Δ
3			4-1/4	1-3/16	10.00
1-1/2	9	1-5/16	2-9/16	1	14.75Δ
2			3-1/16	1	14.00Δ
2-1/2			3-9/16	1-1/8	13.50Δ
3			4-1/4	1-3/16	12.75Δ
3-1/2	10	1-5/16	4-13/16	1-1/4	12.00
3			4-1/4	1-3/16	17.00Δ
4	11	1	5-5/16	1-5/16	16.00Δ
1-1/2			2-9/16	1-1/16	27.00
2			3-1/16	1-1/16	26.00Δ
2-1/2			3-9/16	1-1/8	25.00
3	13-1/2	1-1/8	4-1/4	1-3/16	23.00Δ
4			5-5/16	1-5/16	21.00Δ
5			6-7/16	1-7/16	19.00Δ
2			3-1/16	1-3/16	44.00
3	16	1-3/16	4-1/4	1-3/16	40.00
4			5-5/16	1-5/16	37.00Δ
5			6-7/16	1-7/16	34.00
6			7-9/16	1-9/16	31.00Δ
6	19	1-1/4	7-9/16	1-9/16	53.00Δ
8			9-11/16	1-3/4	50.00Δ
6	19	1-1/4	7-9/16	1-9/16	88.00
8			9-11/16	1-3/4	81.00
10			11-15/16	1-15/16	72.00





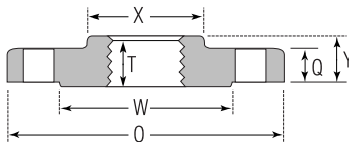
IRON FLANGES CLASS 250, EXTRA HEAVY

Companion Flange
Cast Iron: Figure 1025



Pipe Size (NPS)	Flange Diameter O (in)	Min. Flange Thickness Q (in)	Min. Hub Diameter X (in)	Min. Length Through Hub-Y (in)	Min. Length of Threads T (in)	Diam. of Raised Face W (in)	Weight Case Iron (lbs)
1-1/4	5-1/4	3/4	2-1/2	1	0.76	3-1/16	3.75
1-1/2	6-1/8	13/16	2-3/4	1-1/8	0.87	3-9/16	5.75
2	6-1/2	7/8	3-5/16	1-1/4	1.00	4-3/16	6.50
2-1/2	7-1/2	1	3-15/16	1-7/16	1.14	4-15/16	9.50
3	8-1/4	1-1/8	4-5/8	1-9/16	1.20	5-11/16	12.33
3-1/2	9	1-3/16	5-1/4	1-5/8	1.25	6-5/16	16.00
4	10	1-1/4	5-3/4	1-3/4	1.30	6-15/16	20.00
5	11	1-3/8	7	1-7/8	1.41	8-5/16	24.00
6	12-1/2	1-7/16	8-1/8	1-15/16	1.51	9-11/16	32.00
8	15	1-5/8	10-1/4	2-3/16	1.71	11-15/16	51.00
10	17-1/2	1-7/8	12-5/8	2-3/8	1.92	14-1/16	77.00
12	20-1/2	2	14-3/4	2-9/16	2.12	16-7/16	103.00

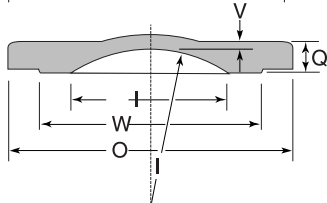
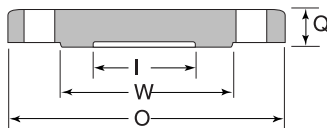
Reducing Companion Flange
Cast Iron
Figure 1030



Pipe Size (NPS)	Flange Diameter O (in)	Min. Flange Thickness Q (in)	Min. Length Through Hub-Y (in)	Min. Length of Threads T (in)	Diam. of Raised Face W (in)	Weight Case Iron (lbs)
2	8-1/4	1-1/8	1-1/4	1.00	5-11/16	14.25
2-1/2	8-1/4	1-1/8	1-7/16	1.14	5-11/16	13.50
3	10	1-1/4	1-9/16	1.20	6-15/16	22.75
4	11	1-3/8	1-3/4	1.30	8-5/16	30.00
4	12-1/2	1-7/16	1-3/4	1.30	9-11/16	39.50
5	12-1/2	1-7/16	1-7/8	1.41	9-11/16	36.00
6	15	1-5/8	1-15/16	1.51	11-15/16	59.00

Blind Flange
Cast iron
Figure 1021

8 x 15 and smaller



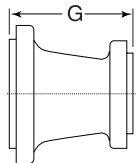
10 x 17 1/2 and larger

Pipe Size (NPS)	Flange Diam. O (in)	Diam. of Port I (in)	Min. Flange Thickness Q (in)	Min. Metal Thickness V (in)	Weight Cast Iron (lbs)
1	4-7/8	1	11/16	...	4.0
1-1/2	6-1/8	1-1/2	13/16	...	5.25
2	6-1/2	2	7/8	...	7.00
2-1/2	7-1/2	2-1/2	1	...	11.00
3	8-1/4	3	1-1/8	...	14.00
3-1/2	9	3-1/2	1-3/16	...	19.00
4	10	4	1-1/4	...	23.00
5	11	5	1-3/8	...	31.00
6	12-1/2	6	1-7/16	...	42.00
8	15	8	1-5/8	...	70.00
10	17-1/2	10	1-7/8	15/16	104.00
12	20-1/2	12	2	1	145.00



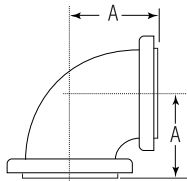
CAST IRON FLANGED FITTINGS CLASS 250, EXTRA HEAVY

Concentric Reducer
 Figure 855



Size (NPS)		G (in)	Weight (lbs)
2-1/2	2	5-1/2	24
3	2	6	25
	2-1/2		29
4	2	7	36
	2-1/2		40
	3		44
5	2-1/2	8	50
	3		54
	4		63
6	2-1/2	9	63
	3		67
	4		77
	5		85
8	4	11	105
	5		115
	6		130
10	6	12	170
	8		190

90° Elbows
 Figure 831



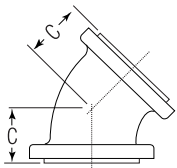
Size (NPS)	A (in)	Flange Diameter (in)	Flange Thickness (in)	Diam. of Raised Face (in)	Wall Thickness of Body (in)	Weight (lbs)
2	5	6-1/2	7/8	4-3/16	7/16	20
2-1/2	5-1/2	7-1/2	1	4-15/16	1/2	30
3	6	8-1/4	1-1/8	5-11/16	9/16	40
4	7	10	1-1/4	6-15/16	5/8	65
5	8	11	1-3/8	8-5/16	11/16	87
6	8-1/2	12-1/2	1-7/16	9-11/16	3/4	115
8	10	15	1-5/8	11-15/16	13/16	185
10	11-1/2	17-1/2	1-7/8	14-1/16	15/16	290
12	13	20-1/2	2	16-7/16	1	410

Lakeside can also furnish a full line of cast steel flanged pipe fittings. Virtually any flanged fitting configuration produced in cast iron is also made in cast steel. 150#, 300#, and higher rated fittings are readily available. Please contact us for a price and availability proposal.



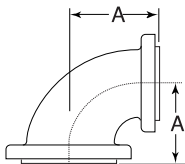
CAST IRON FLANGED FITTINGS CLASS 250, EXTRA HEAVY

Elbows
Figure 832



Size (NPS)	C (in)	Flange Diameter (in)	Flange Thickness (in)	Diam. of Raised Face (in)	Wall Thickness of Body (min)(in)	Weight (lbs)
2	3	6-1/2	7/8	4-3/16	7/16	18
2-1/2	3-1/2	7-1/2	1	4-15/16	1/2	28
3	3-1/2	8-1/4	1-1/8	5-11/16	9/16	35
4	4-1/2	10	1-1/4	6-15/16	5/8	58
5	5	11	1-1/4	8-5/16	1-1/16	76
6	5-1/2	12-1/2	1-7/16	9-11/16	3/4	105
8	6	15	1-5/8	11-15/16	1-3/16	155
10	7	17-1/2	1-7/8	14-1/16	1-5/16	240
12	8	20-1/2	2	16-7/16	1	340

Taper Reducing Elbow
Figure 833



Size (NPS)	A (in)	Weight (lbs)
4	3	52
	2-1/2	48
5	4	78
	3	65
6	5	100
	4	93
8	6	155
	5	100
10	8	240
	6	210

Tee, Reducing on Run or Outlet
Figure 842

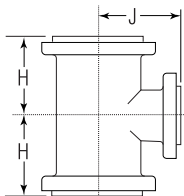


In describing tees, the run is first named, then the outlet, thus:

Dimensions for reducing tees for sizes listed 16 NPS and smaller have same center to face dimension as straight size fittings corresponding to the largest opening. Dimensions of sizes not listed furnished on request.

Size Reducing (NPS)			Weight (lbs)
3	3	2-1/2	55
		2	50
4	4	2	77
		2-1/2	83
		3	84
5	5	4	125
6	6	3	148
		4	160
8	8	4	229
		6	257
10	10	6	369
		8	376

Straight Tees
Figure 841



Size (NPS)	Min. Inside Diam. of Fitting (in)	J (in)	HH (in)	Flange Diam. (in)	Min. Flange Thickness (in)	Diam. of Raised Face (in)	Min. Wall Thickness of Body (in)	Weight (lbs)
2	2	5	10	6-1/2	7/8	4-3/16	7/16	32
2-1/2	2-1/2	5-1/2	11	7-1/2	1	4-15/16	1/2	46
3	3	6	12	8-1/4	1-1/8	5-11/16	9/16	58
4	4	7	14	10	1-1/4	6-15/16	5/8	99
5	5	8	16	11	1-3/8	8-5/16	11/16	135
6	6	8-1/2	17	12-1/2	1-7/16	9-11/16	3/4	180
8	8	10	20	15	1-5/8	11-15/16	13/16	280
10	10	11-1/2	23	17-1/2	1-7/8	14-1/16	15/16	430
12	12	13	26	20-1/2	2	16-7/16	1	620