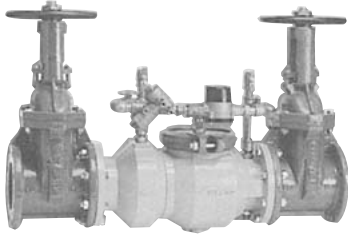


WILKINS WATER CONTROL & MANAGEMENT
A ZURN - Company

Backflow Preventers

Double Check Detector 350DA Series Pat No. 5,913,331

Features

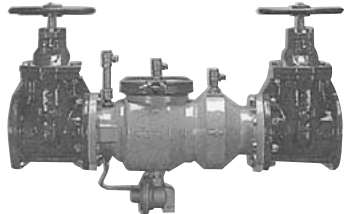


- **Sizes: 2-1/2", 3", 4", 6", 8"**
- Double check valve consisting of two independently operated spring-loaded center guided check valves
- Complete with two resilient wedge OS&Y gate valves and four resilient seated ball valve test cocks
- The by-pass assembly consists of a water meter in series with a double check backflow preventer
- For use in fireline applications
- Lightweight, thin wall, epoxy-coated ductile iron
- Check components are made from lead-free engineered plastics and stainless steel
- No threads or taps in body or cover, eliminating exposure to corrosion

- Single access cover reduces maintenance and down time
- Entire unit serviceable in line
- Temperature range 33°F–140°F
- Maximum pressure 175 psi
- ASSE® Listed 1048 (Horizontal/Vertical), UL® Classified (Horizontal/Vertical), C-UL® Classified (Horizontal/Vertical), FM® Approved (Horizontal/Vertical), CSA® Certified (sizes 4", 6", Horizontal/Vertical), AWWA Compliant (sizes 4", 6", 8", Horizontal/Vertical)
- Approved by the Foundation for Cross-Connection Control and Hydraulic Research at the University of Southern California (sizes 4" and 6")
- Available with CFM water meter (5/8" x 3/4")

Reduced Pressure Principle 375 Series Pat. No. 5,913,331

Features

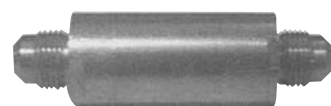


- **Sizes: 2-1/2", 3", 4", 6", 8"**
- Reduced pressure principle backflow preventer consisting of a pressure differential relief valve located between two independently operated spring-loaded center guided check valves
- Complete with two non-rising stem resilient wedge gate valves and four resilient seated ball valve test cocks
- Lightweight, thin wall, epoxy-coated ductile iron
- Check components are made from lead-free engineered plastics and stainless steel
- No threads or taps in body or cover, eliminating exposure to corrosion

- Single access cover reduces maintenance and down time
- Relief valve located on bottom of valve with test cocks facing up—Allows for easy installation and repair
- Temperature range 338F–150°F
- Maximum pressure 175 psi
- ASSE® Listed 1013, UL® Classified, AM® Approved, AWWA Compliant, C-UL® Classified, CSA® Certified, IAPMO® Listed
- Approved by the Foundation for Cross-Connection Control and Hydraulic Research at the University of Southern California (size 1-1/2", 3", 4", 6")

Backflow Preventer for Vending Machine Water Supply Model 740

Features



- Size 3/8" Flare Fitting Threads inlet and outlet
- Designed for installation in vending machine water supply lines to prevent backflow of carbon dioxide and carbonated water into the potable supply
- Pressure rated to 150 psi
- Maximum temperature 140°F
- Consists of two spring loaded check valves with an atmospheric vent located between the two checks

- Quick acting check valves prevent unnecessary vent discharge
- Body and end caps are manufactured with high quality stainless steel
- Silicon rubber check valve discs
- Stainless steel springs
- Stainless steel strainer screen provided on the inlet to prevent check fouling due to debris in the supply water line
- ASSE® Listed 1022

WILKINS WATER CONTROL & MANAGEMENT
A ZURN Company

Water Pressure Reducing Valves

70 Series Features

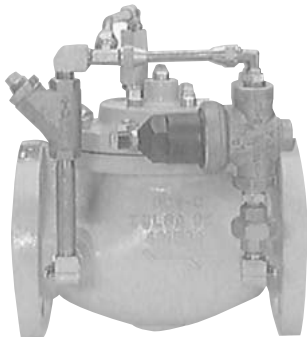


- **Sizes:** 1/2", 3/4", 1", 1-1/4", 1-1/2", 2"
- Pressure rated 300 psi
- Spring range 25 to 75 psi; factory set at 50 psi
- Maximum temperature 180°F
- Union end connection standard, available 1/2" through 2" in FNPT
- All bronze body and bell housing provides durability and long life
- Built-in by-pass prevents buildup of excessive system pressure caused by thermal expansion

- Integral stainless steel strainer
- Nylon reinforced Buna-N diaphragm
- Balanced piston design
- May be installed in any position
- All internal parts corrosion-resistant and included in a replaceable cartridge
- Serviceable in-line
- Available tapped and plugged for gauge (optional)
- Available tapped with gauge (optional)
- Available with BSP threads (optional)
- ASSE® Listed 1003, IAPMO® Listed, CSA® Certified, City of Los Angeles

Automatic Control Valves

Pressure Reducing Valves ZW127-3B Series Features

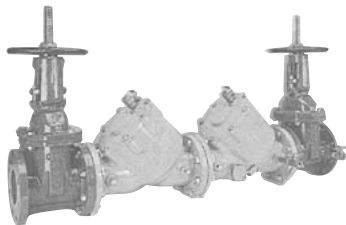


- **Sizes:** 1-1/4", 1-1/2", 2", 2-1/2", 3", 4", 6", 8", 10", 12", 14", 16", 24"
- Standard spring range 15 to 150 psi, contact factory for other spring range options
- Reduces higher upstream pressure to the constant desired downstream pressure regardless of changing flow or inlet pressure
- Ductile iron body and bonnet ASTM-A536 epoxy coated. Bronze (ASTM B62) trim and pilots

- Diaphragm actuated, hydraulically operated, pilot controlled
- Maximum temperature 180°F
- Pressure rated: Class 150: 250 psi max. (1-1/4"–16"); Threaded: 400 psi max. (1-1/4"–3")
- Globe or angle configurations available (specify when ordering)
- Contact factory for additional specifications, pressures, and spring ranges
- Vertical flow-up (1-1/4"–6")

Backflow Preventers

Double Check Valve 950 Series Features



(Shown with optional OS&Y gate valves)

- **Sizes:** 2-1/2", 3", 8", 10"
- Double check valve assembly consisting of two independently operated spring-loaded center guided check valves
- Complete with two non-rising stem resilient wedge gate valves and four resilient seated ball valve test cocks
- Fusion epoxy coated maincase, inside and out with an FDA approved material
- Replaceable seats and seat discs
- Stainless steel and bronze corrosion-resistant internal parts

- Entire unit serviceable in line
- Temperature range 33°F–140°F
- Maximum pressure 175 psi
- ASSE® Listed 1015 (Horizontal/Vertical), IAPMO® Listed (Horizontal), CSA® Certified (Horizontal/Vertical), AWWA (Horizontal/Vertical), UL® Classified (Horizontal), FM® Approved (Horizontal, C-UL® Classified (Horizontal)
- Approved by the Foundation for Cross-Connection Control and Hydraulic Research at the University of Southern California for horizontal (all sizes) and vertical (sizes 4", 6", 8") installations

We stock repair parts for all Wilkins backflow preventors.