



UNITED BRASS WORKS, INC.

BRASS VALVES

INSPECTOR'S TEST & RELIEF VALVE

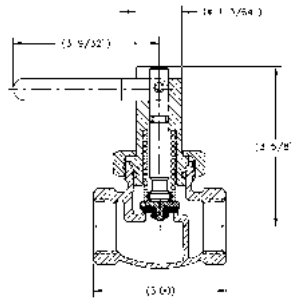


132 1"

The Model 132 1" is designed to combine the function of both the inspector's test drain valve and pressure relief valve into a single unit for gridded sprinkler systems. The automatic relief feature will activate when the system pressure reaches 175 PSI. The valve can be manually operated for performing an inspector's test or the lever can be moved to the automatic relief position for normal operation. The valve also features a "lock-out" position which will prevent

the automatic relief feature from activating during a system test in excess of 175 PSI. Complete operating instructions are included with each valve. Packed one per box. Not for use in systems with jockey pumps set at 160 psi or above.

- 200 lbs. WOG @ 180°F Max**
- 100% Pressure Tested**
- Screwed Ends**
- "O" Ring Stem Seal**
- Nonmetallic Disc**
- Union Bonnet**
- Body Material: Bronze Conforming to ASTM B584-C84400**
- 1" Size Only**
- UL Listed**
- Patent #5662139**



GATE VALVES

Bronze Screwed Ends

This UL listed FM approved heavy duty O S & Y Gate Valve is recommended for fire sprinkler system service. It is listed as a fire main gate valve and is used where a positive indication of open or closed valve is necessary.

- UL Listed/FM Approved**
- 175 lbs. WOG for Fire Service**
- 100% Hydrostatic Tested**
- Cast Iron Hand Wheel**
- Rising Stem**
- Outside Screw & Yoke**
- Bronze Conforming to ASTM B584-C84400**
- Approved by the New York City Board of Standards and Appeals under Calendar No. 1079-81-SA.**
- MEA Approval 255-93-E**

Outside Screw & Yoke



Sizes: 1"; 1-1/4"; 1-1/2"; and 2" 18

Y-BLOW DOWN VALVES

(Complies with MSS-SP-80-97)
Conforms to ASME Boiler Code



226UT

Y-Valves resemble gate valves in their ability to permit maximum flow and globe valves in their ability to attain tight closure. These combined qualities make this valve unequalled for blowing off boilers. Because of their construction, they can withstand the frequent opening and closing necessary for this application.

- 200 lbs. WSP @ 406°F max. Non shock service**
- 400 lbs. WOG**
- 100% Pressure Tested**
- Screwed Ends—Rising Stem**
- Replaceable Teflon* Disc**
- Integral Bronze Seat**
- Union Bonnet**
- Non-Asbestos Packing**
- Ventilated Aluminum Alloy Hand Wheel**
- Body Material: Bronze Conforming ASTM B62**

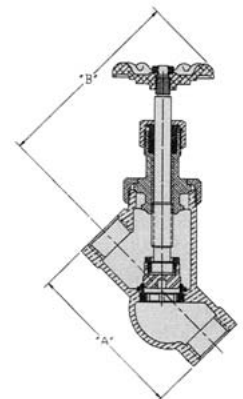
This valve is not intended for severe service or excessive amounts of particulate matter. Keep rust and scale in system from imbedding in disc and causing "wire draw" effect on seat which will eventually cause valve to leak. For severe service, specify #325U (See below).

Care must be taken in blow down piping so that no water hammer effect causes shock to the "Y" blow down valve, especially in cases where a boiler has two blow down lines. In such cases both lines should be piped to a common set of blow down valves or each blow off line should be piped separately to the blow down separator. Excessive water hammer or shock can destroy valves and piping and could cause injury.

Size	Weight Ctn.				Qty.
	"A"	"B"	226UT	325U	
1"	4.75	5.75	4.20	4.75	4
1-1/4"	5.56	7.00	6.10	6.25	4
1-1/2"	6.25	7.75	9.00	8.60	2
2"	7.75	8.75	15.00	15.11	2

Heavy Duty 300 lb. class valves are equipped with a hardened stainless steel plug and removable seat to shed particles of rust and scale and resist pitting.

- Class 300 lbs. WSP non shock service**
- 600 lbs. WOG**
- 100% Pressure Tested**
- Screwed Ends—Rising Stem**
- Seat & Disc 400-500 Brinnell Stainless Steel**
- Union Bonnet**
- Non-Asbestos Packing**
- Ventilated Aluminum Alloy Hand Wheel**
- Body Material: Bronze Conforming ASTM B61**



325U

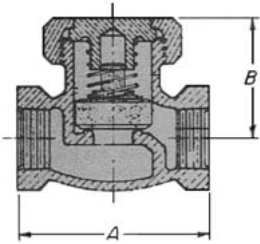


UNITED BRASS WORKS, INC.

BRASS VALVES

CHECK VALVES

FULL FLOW SPRING-LOADED LIFT CHECK (Conforms with MSS-SP-80-97P)



200 lbs. WOG @ 406°F
 400lbs. WOG
 100% Pressure Tested
 Body Material: Bronze Conforming
 to ASTM B62
 All Teflon* disc & holder assembly
 Screwed Ends

This full flow spring loaded check valve has a solid piece of Teflon* replacing the disc and holder assembly. This new design permits the disc to be self-guiding without prongs going through the seat, so there is no restriction in the seat area to reduce flow. The clear seating area resists clogging from materials in the line and can be used with viscous materials. The solid Teflon* disc gets little wear both at the seat surface and where it guides itself in the valve body. This valve can be engineered as a bypass relief valve for OEM applications by designing a spring that will allow the valve to relieve at a predetermined pressure. Sizes available: 1/4"-2". Not recommended for pulsating or vibrating service.



53

Size	1/4"	3/8"	1/2"	3/4"	1"	1-1/4"	1-1/2"	2"
A	2-3/16"	2-23/64"	2-19/32"	3-11/64"	3-3/4"	4-9/32"	4-25/32"	5-7/8"
B	1-3/16"	1-1/2"	1-5/8"	1-13/16"	2-1/16"	2-3/8"	2-5/8"	3-1/4"
C	1-1/4"	1-11/32"	1-9/16"	1-3/4"	1-15/16"	2-1/4"	2-5/8"	3-1/4"
D	1-3/32"	1-3/16"	1-3/8"	1-13/32"	1-23/32"	2"	2-7/16"	2-3/4"
Ship Wt. (lbs.)	.56	.75	1.03	1.61	2.44	3.84	5.2	9.0
Quan. Per Ct.	12	12	12	12	6	6	2	4

WHISTLE VALVES

QUICK-OPENING; SELF-CLOSING GLOBE VALVE



25WT

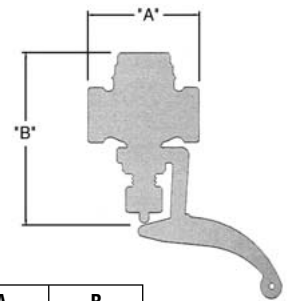


44SS



Loop Handle Lever

200 lbs. WSP
 (No. 44 Series 150 WSP)
 400 lbs. WOG
 100% Hydrostatic Tested
 No. 50TG Teflon* Disc
 Body Material: Bronze
 Conforming to ASTM B62



VC 25WT

Various Levers are available or valve can be cylinder operated.

- No. 44—1/4" Valve Less Yoke & Lever
- No. 44SS—1/4" Valve with Yoke & Lever & Built-in Stainless Steel Strainer Screen
- No. 44NY—Valve with Yoke & Loop Handle Lever
- No. 44NYLL—Valve Less Lever with Yoke
- No. 25WT—1/4"-1" with Yoke and Lever
- No. 25WTBL—1/4"-1/2" with Button Lever
- No. 25WACT—Less Yoke & Lever

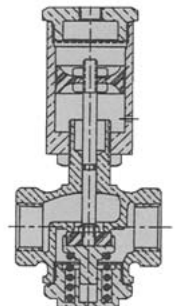
The 25WT features a packing chamber stem seal while the 44 employs an O Ring Stem Seal.

Both No. 25WT and No. 44 Whistle Valves are available with or without yokes and levers.

On Catalog	A	B
44SS-1/4"	1-7/8"	2-1/2"

On Catalog	A	B	Quantity per ctn
25WT-1/4"	2-11/32"	3-7/32"	10
25WT-3/8"	2-11/32"	3-7/32"	6
25WT-1/2"	2-11/16"	4"	5
25WT-3/4"	3"	4-1/2"	6
25WT-1"	3-3/4"	5-1/4"	4

Above valves are available in air cylinder operated versions. Consult factory for service, applications, sizes, etc. Available in 1/2". Consult factory for additional sizes.





UNITED BRASS WORKS, INC.

BRASS VALVES

“SURE SITE” FLOW INDICATORS

“Sure Site” indicators permit straight-through flow. Sight glasses on both sides are sealed by two gaskets with flush-type sealing rings. Size of indicators are specified by pipe size, not glass size.

“Sure Site” indicators enable immediate determination of quality, color and flow of such products as gasoline, oil, water, perchlorethylene and other chemicals. They reveal visible signs of line stoppage and help maintain high product purity by eliminating guesswork and mistakes.



132 1"

70HRP—Sprinkler System Flow Indicator with Polycarbonate* Window

Flow indicator with a built-in 1/2" orifice is designed for use on fire protection sprinkler systems for inspectors to check flow in accordance with NFPA 13 #3.9.2.

By combining the indicator with the orifice, piping is simplified. Access is provided to clean out the orifice without disturbing the piping by removing the ring and glass from the side of the indicator.

Available in 1" & 1-1/4"

70H (Glass)

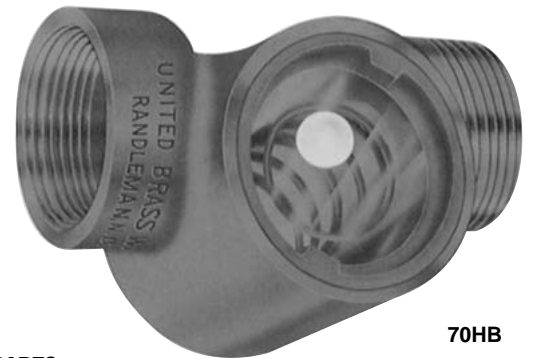
70P—High Pressure Indicator with Polycarbonate* Window.

70BSP—Indicator with Activity Signal and Polycarbonate* Window.

70HB—Indicator with Activity Signal (Glass)

•(Continuous use above 150°F can cause embrittlement and reduce strength of Polycarbonate Window)

For special applications, pressures, or media, inquire about high pressure glass and special gaskets. There is no restriction of flow as with a Spinner. This flow indicator employs a constrained nylon ball to permit an unmistakable indication that liquid in the system is in motion. In indicators without the ball, if liquid is at equilibrium, often glass appears full and motion cannot be determined. Furthermore, colorless liquids are difficult to detect. The ball vibrates on the “cage” to show liquid flow activity while fluid is in motion. This vibration is caused by the special eccentric design of the indicator. When liquid is not in motion, ball is at rest also.



70HB

REPLACEMENT PARTS

No. 73—Composition External Gasket

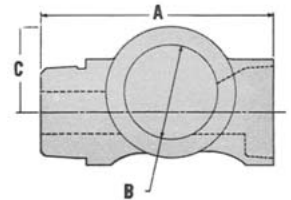
No. 74T—Tempered Soda Lime High Pressure Glass

No. 75—Buna N Internal Gasket

No. 75TG—Teflon* Gasket

No. 74H—Glass Window for 70H & 70HB

No. 74P—Polycarbonate Window for 70P, 70HRP, & 70BSP



Size	3/4"	1"	1-1/4"	1-1/2"	2"	2-1/2"	3"***
Operating Pressures (PSI) (Higher Pressure Glass Available As Special)							
70P, 70BSP & 70HRP	175	175	175	175	175	175	175
70H & 70HB	85	85	85	40	40	40	25
A	4"	4"	4"	6-3/16"	6-3/16"	6-3/8"	6-7/8"
B	1-5/8"	1-5/8"	1-5/8"	2-7/16"	2-7/16"	2-7/16"	2-29/32"
C	1-11/16"	1-11/16"	1-3/4"	2-1/4"	2-1/4"	2-1/4"	2-33/64"
Ship Wt. (lbs.)	1.37	1.5	1.5	4.69	4.56	5.25	8.25
Quan. Unit Pack	4	4	4	2	2	1	1
Quan. Per Case	40	40	40				

BALL DRIP VALVE

Used in the sprinkler industry to relieve pipe of excess water and to prevent freezing.

200 lbs. WOG
Sizes: 1/2" and 3/4"
Shipping Weights:
 1/2"—0.43 lbs.
 3/4"—0.56 lbs.
Quantity Per Ctn.: 12



235