

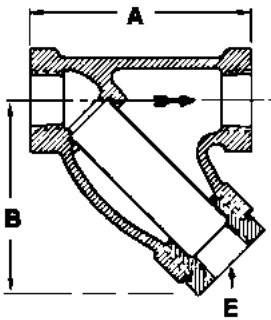
# KECKLEY 'Y' AND BASKET STRAINERS

## Style B Cast Iron Screwed

### Y-Type, 250 lb.

BODY: ASTM A 126, CLASS B

BUSHING: MALLEABLE IRON



STYLE B

### WORKING PRESSURE— NON SHOCK

250 lb. Screwed

Steam . . . . .250 PSI—406°F

Water, Oil, Gas . . . . .400 PSI—150°F

### STANDARD SCREENS

#### STAINLESS STEEL PERFORATIONS FOR

SIZE	STEAM	LIQUIDS
1/4"–2"	20 Mesh	Stainless Steel
2-1/2"–3"	3/64"	1/16"

Other size perforations in stainless steel, monel, brass, or wire mesh are available to meet specific media requirements. If media not indicated, screens for *steam* will be supplied.



### CONSTRUCTION FEATURES

The KECKLEY Style B Strainers with shell coring have a sound, fine finish casting. Style B Strainer screens through 2" are guided and retained in both body and bushing, assuring protection and appearance, proper alignment and seal. 2-1/2" and 3" Style B Strainers are provided with a groove in the body and taper in the bushing to provide maximum closure or seal at each end of screen.

## Style B

## Dimensions & Shipping Weights (APPROXIMATE)

SIZE	1/4	3/8	1/2	3/4	1	1-1/4	1-1/2	2	2-1/2	3
A	3	3	3	4	4-7/8	5-1/8	5-3/4	7-1/4	8-7/8	10
B	2-5/8	2-5/8	2-5/8	3-5/8	4-1/2	4-3/4	4-7/8	5-3/4	6-7/8	7-1/2
E	3/8	3/8	3/8	1/2	3/4	3/4	1	1-1/4	1-1/4	1-1/2
WEIGHT—lb.	1-1/2	1-1/2	1-1/2	2-1/2	4	5-1/2	8	13-1/2	25	45

Certified Dimensional Sheets Available

**KECKLEY 'Y' AND BASKET STRAINERS**

**Style A & GA Cast Iron Flanged**

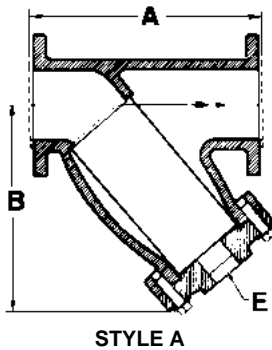
**Y-Type, 125 lb. & 250 lb.**  
**BODY & COVER:**  
**ASTM A 126, GLASS B**



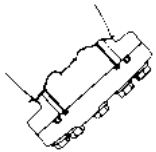
**CONSTRUCTION FEATURES**

The KECKLEY Style A Strainers with correctly proportioned bodies and screens are manufactured from the finest cast iron castings, machined to exacting specifications for proper alignment and seal. The Style A Strainer screen is piloted in both body and cover. Style A Strainers may be installed in downward vertical lines with effectiveness equal to horizontal installation.

THE KECKLEY Style GA "Y" Pattern (leak proof) Gas Strainers are used extensively for protecting gas meters and compressors in metering stations. The strainer utilizes a Buna N-70-Durometer O-Ring instead of a conventional gasket on the solid cover plate.



**STYLE A**



**STYLE GA**  
 (Special O-Ring Seal With Solid Cover Plate)

**WORKING PRESSURE—NON SHOCK**

**SIZES 2"–12"**  
 125 lb FF&D Steam . . .125 PSI—450°F  
 Water, Oil, Gas . . . . .200 PSI—150°F  
 250 lb RF&D Steam . . .250 PSI—450°F  
 Water, Oil, Gas . . . . .500 PSI—150°F

**SIZES 14"–18"**  
 125 lb FF&D Steam . . .100 PSI—353°F  
 Water, Oil, Gas . . . . .150 PSI—150°F  
 250 lb RF&D Steam . . .200 PSI—406°F  
 Water, Oil, Gas . . . . .300 PSI—150°F

**STANDARD SCREENS**

**STAINLESS STEEL PERFORATIONS FOR**

SIZE	STEAM	LIQUIDS
2"–4"	3/64"	1/16"
5"–10"	3/64"	1/8"
12"	1/16"	1/8"
14"–18"	1/8"	1/8"

Other size perforations in stainless steel, monel, brass, or wire mesh are available to meet specific media requirements. If media not indicated, screens for *steam* will be supplied.

**Style A**

**Dimensions & Shipping Weights (APPROXIMATE)**

SIZE	2	2-1/2	3	3-1/2	4	5	6	8	10	12	14	16	18
<b>A 125 lb.</b>	8-3/8	9-7/8	10-1/4	12-1/8	12-1/8	15-5/8	18-9/16	24-1/8	29-9/16	33-3/4	37-1/8	42-3/8	43-1/8
<b>A 250 lb.</b>	9-7/8	11-1/4	12-1/2	14-5/8	14-5/8	18	20-3/8	23-7/8	29-5/8	33-3/4	38	42-1/2	Appl.
<b>B 125 lb.</b>	8-3/8	8-3/8	7-3/8	8-3/4	8-3/4	12	14	17-3/4	21-1/4	24	25-1/2	29-1/8	31
<b>B 250 lb.</b>	6-1/4	7-3/4	8-1/4	10-1/8	10-1/8	12-1/2	14-3/8	17-1/2	21	23-5/8	25-1/2	29-1/4	Appl.
<b>E</b>	1-1/4	1	1	2	1-1/2	2	2	2	2	2	2	2	2
<b>WT. 125 lb.</b>	<b>30</b>	<b>35</b>	<b>35</b>	<b>65</b>	<b>65</b>	<b>105</b>	<b>155</b>	<b>240</b>	<b>400</b>	<b>500</b>	<b>825</b>	<b>1050</b>	<b>2280</b>
<b>WT. 250 lb.</b>	<b>35</b>	<b>40</b>	<b>45</b>	<b>80</b>	<b>80</b>	<b>110</b>	<b>165</b>	<b>315</b>	<b>525</b>	<b>700</b>	<b>1400</b>	<b>1850</b>	<b>Appl.</b>

Certified Dimensional Sheets Available

Larger Sizes consult factory

Bulletin 8815-5

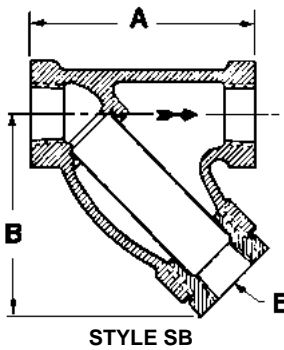
# KECKLEY 'Y' AND BASKET STRAINERS

## Style SB Cast Carbon Steel Screwed & Socket Weld

### Y-Type, 600 lb.

BODY: ASTM A 216, CLASS WCB

BUSHING, CAP OR COVER: CARBON STEEL



### WORKING PRESSURE— NON SHOCK

600 lb. Screwed & Socket Weld  
 Steam . . . . .600 PSI—838°F  
 Water, Oil, Gas . . . .1480 PSI—100°F

### STANDARD SCREENS

#### STAINLESS STEEL PERFORATIONS FOR

SIZE	STEAM	LIQUIDS
1/4"–3"	3/64"	1/16"

Other size perforations in stainless steel, monel, brass, or wire mesh are available to meet specific media requirements. If media not indicated, screens for *steam* will be supplied.

### CONSTRUCTION FEATURES

The KECKLEY Style SB Strainers are a heavy-duty design of carbon steel. The 1/4" thru 1-1/2" sizes are provided with a tapered bushing. The 2" size features a screwed cap with gasket. The 2-1/2" and 3" sizes feature a gasket and bolted cover. Style SB Strainer screens are guided and retained to ensure proper alignment and seal. Socket weld connections per ASA B 16-11.

"ALSO AVAILABLE IN STAINLESS STEEL"

## Style SB Dimensions & Shipping Weights (APPROXIMATE)

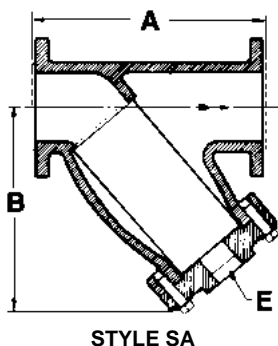
SIZE	1/4	3/8	1/2	3/4	1	1-1/4	1-1/2	2	2-1/2	3
A	3	3	4	4	5	5-1/8	5-3/4	8	9	10
B	2-3/4	2-3/4	3-5/8	3-5/8	4-5/8	4-7/8	5	7-1/8	7-3/4	8-3/8
SOCKET DIA.	.555	.690	.855	1.065	1.330	1.675	1.915	2.406	2.906	3.535
SOCKET DEPTH	3/8	3/8	3/8	1/2	1/2	9/16	5/8	3/4	7/8	7/8
E	3/8	3/8	3/8	3/8	3/4	3/4	1	3/4	1-1/4	1-1/4
WEIGHT—lb.	2	2	3	3	6	7	10	20	24	33

Certified Dimensional Sheets Available

**KECKLEY 'Y' AND BASKET STRAINERS**

**Style SA Cast Carbon Steel Flanged & Butt Weld**

**Y-Type, 150 lb. & 300 lb.**  
**BODY & COVER:**  
**ASTM A 216, GLASS WCB**



**WORKING PRESSURE—  
NON SHOCK**

**SIZES 2"–12"**

**150 lb RF&D & Butt Weld**

Steam . . . . .150 PSI—565°F

Water, Oil, Gas . . . . .285 PSI—100°F

**300 lb RF&D & Butt Weld**

Steam . . . . .300 PSI—838°F

Water, Oil, Gas . . . . .740 PSI—100°F

**CONSTRUCTION  
FEATURES**

The KECKLEY Style SA Strainers are constructed from generously proportioned, rugged carbon steel bodies, machined to exacting specifications. The Style SA Strainer screen is piloted in both body and cover to insure proper alignment. End flanges: Conform to ANSI B16.5. Butt weld end: Conforms to the inside diameter of standard or extra-heavy pipe. Ring type joint end flanges: Available in all sizes and pressures.

**STANDARD SCREENS**

**STAINLESS STEEL PERFORATIONS  
FOR**

SIZE	STEAM	LIQUIDS
2"–4"	3/64"	1/16"
5"–10"	3/64"	1/8"
12"	1/16"	1/8"

Other size perforations in stainless steel, monel, brass, or wire mesh are available to meet specific media requirements. If media not indicated, screens for *steam* will be supplied.

**"ALSO AVAILABLE IN STAINLESS STEEL"**

**Style A**

**Dimensions & Shipping Weights (APPROXIMATE)**

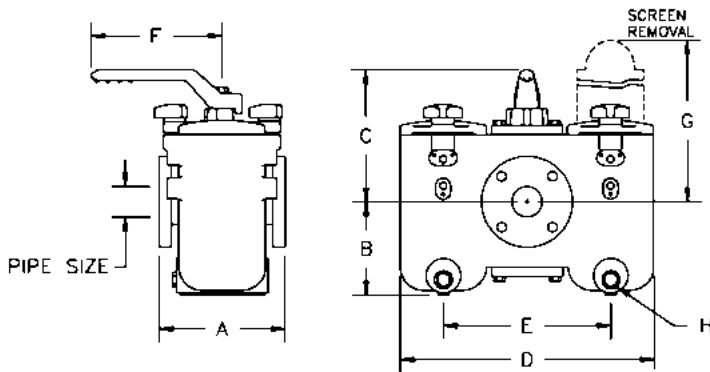
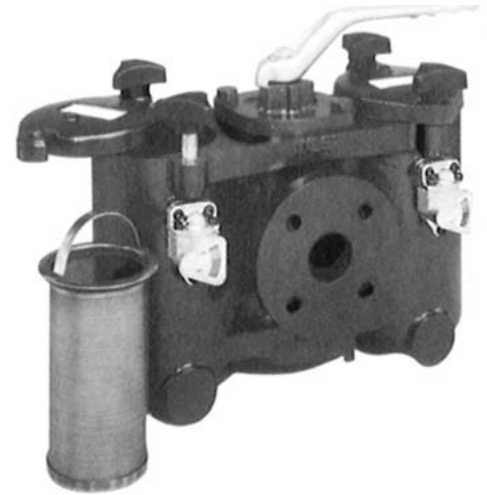
SIZE	2	2-1/2	3	4	5	6	8	10	12	14	16
<b>A 150 lb.</b>	8-3/8	9-7/8	10-5/8	15	15-5/8	17-3/4	21-5/8	26	29-7/8	ON REQUEST	
<b>A 300 lb.</b>	8-7/8	10-1/2	11-3/8	15-5/8	16-3/8	18-5/8	23-3/8	27-3/8	32	ON REQUEST	
<b>B 150 lb.</b>	8-1/4	8-1/2	8-1/4	12-1/2	11-1/4	15	15-1/2	18-1/2	21-3/4	ON REQUEST	
<b>B 300 lb.</b>	8-1/4	8-1/2	8-1/4	12-1/2	11-1/4	15	15-3/4	19	22-1/4	ON REQUEST	
<b>E</b>	1-1/4	1-1/4	1-1/4	2	2	2	2	2	2	ON REQUEST	
<b>150-300 lb. BUTT WELD</b>	CONSULT FACTORY										
<b>WT. 150 lb.</b>	33	38	65	104	90	187	220	320	550	ON REQUEST	
<b>WT. 300 lb.</b>	37	55	71	143	120	244	300	440	650	ON REQUEST	

Certified Dimensional Sheets Available

# KECKLEY 'Y' AND BASKET STRAINERS

## Duplex Strainers Flanged

STYLE	BODY	DIVERTER
DPXF	CAST IRON-125 lb.	BRONZE
WDPXF	CAST IRON-125 lb.	IRON
CDPXF	CAST IRON-125 lb.	STAINLESS STEEL
BDPXF	CAST BRONZE-150 lb.	BRONZE
SDPXF	CAST CARBON STEEL-150 lb.	BRONZE
SCDPXF	CAST CARBON STEEL-150 lb.	STAINLESS STEEL
SSDPXF	CAST STAINLESS STEEL-150 lb.	STAINLESS STEEL



### WORKING PRESSURE— NON SHOCK

Not recommended for steam service

STYLE DPXF, WDPXF, CDPXF  
WATER, OIL, GAS . . . 200 PSI-150°F  
BODY AND COVERS: ASTM A 12, CLASS B

STYLE BDPXF  
WATER, OIL, GAS . . . 225 PSI-150°F  
BODY AND COVERS: ASTM B62

STYLE SDPXF, SCDPXF,  
WATER, OIL, GAS . . . 285 PSI-100°F  
BODY AND COVERS: ASTM A 216, GRADE WCB

STYLE SSDPXF  
WATER, OIL, GAS . . . 275 PSI-100°F  
BODY AND COVERS: Type 316 A 351, GRADE CF8M

### APPLICATIONS

Duplex strainers are used in continuous flow applications where the process can not be shut down for cleaning. Examples: lubrication systems, industrial or marine oil burners, chemical plants, cooling lines in power plants, compressors, condensers, and ink supply lines to printing presses. Duplex strainers are also specified for water lines to cooling towers, and pumping stations where water is taken from lakes or rivers.

### Dimensions & Shipping Weights (APPROXIMATE)

PIPE SIZE	A	B	C	D	E	F	G	H	WEIGHT LBS.	
									IRON BODY	OTHERS
1"	6	4-1/8	5-7/8	10-5/8	6-11/16	6-7/8	8-11/16	1/2	38	44
1-1/2"	6-7/8	5-3/4	6-7/8	11-3/16	7-1/4	6-7/8	12	1/2	53	62
2"	8-1/4	6-1/8	8-3/4	16-3/4	11	8-1/4	13-13/16	1/2	117	139
2-1/2"	8-1/4	6-1/8	8-3/4	16-3/4	11	8-1/4	13-13/16	1/2	119	141
3"	10-1/2	8-1/4	10-1/16	19-1/4	13	9-7/8	17-3/4	1/2	190	225
4"	12-1/2	10-7/16	11-9/16	21-1/4	15	9-7/8	22-5/8	1/2	282	302
*5"	18-5/8	10-9/16	13	23-1/2	16	15	22-5/8	1/2	619	663
*6"	18-5/8	10-9/16	13	23-1/2	16	15	22-5/8	1/2	629	673
8"	22	20-1/2	21-11/16	40-1/8	27-9/16	19-11/16	47-5/8	1/2	1632	1985

\*5" AND 6" DUPLEX STRAINERS HAVE A FOUR BASKET DESIGN.

Certified Dimensional Sheets Available

**KECKLEY 'Y' AND BASKET STRAINERS**

**Screens and Baskets**

The screen or basket is the heart of the Keckley Strainer. The media flows into the open end of the screen or basket and is strained as it passes through the screen toward the outlet. All particles too large for screen or basket perforations are trapped

inside. Screens are provided in perforated metal or wire mesh, depending on strainer size and/or material being strained. Only the best materials of the proper gauge to suit the service are used. All seams are spot welded for maximum strength. Double or

reinforced screens are spot welded on the end peripheries as well as the seams. Reinforced screens consist of a perforated sheet lined with wire mesh. Keckley engineers have designed the screens to provide maximum total screen area.

**MATERIAL**

All Keckley screens and baskets are constructed for long service. Stainless steel screens are standard in all strainers except bronze strainers which use brass screens. Other alloys (i.e. monel) are available.

**MAGNETS**

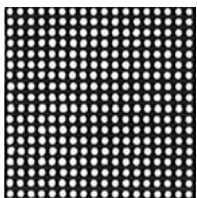
Magnets can be provided as an option which, when placed inside the strainer screen, will remove very fine iron or steel particles present in fluid. Magnets provide protection for equipment against abrasive damage.

**SELECTION**

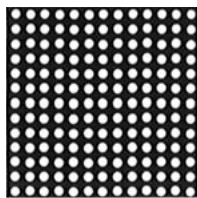
In stainless steel, the smallest perforation obtainable is generally twice the thickness of the metal itself. Therefore, perforations from 0.033" through 0.250" diameter, dependent on metal thickness, are readily available. **SCREENS FOR STEAM SERVICE ARE PROVIDED AS STANDARD WHEN**

**PERFORMANCE OR MEDIA IS NOT SPECIFIED.** When extra-fine straining is required of the larger strainers, reinforced screens consisting of a perforated sheet lined with wire mesh are recommended. This allows removal of fine particles with added durability.

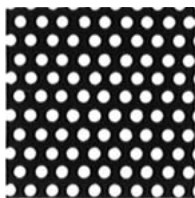
**Perforated Sheet Metal**



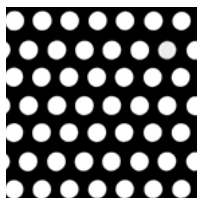
**.033 DIA.**  
1/32" prox.  
331 Holes Per Sq. In.



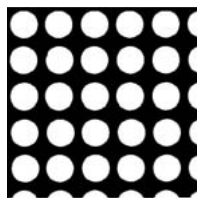
**.045 DIA.**  
3/64" prox.  
225 Holes Per Sq. In.



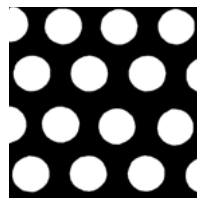
**.062 DIA.**  
1/16" prox.  
98 Holes Per Sq. In.



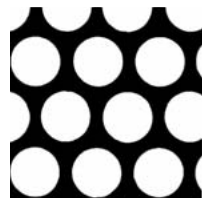
**.094 DIA.**  
3/32" prox.  
51 Holes Per Sq. In.



**.125 DIA.**  
1/8" prox.  
29 Holes Per Sq. In.

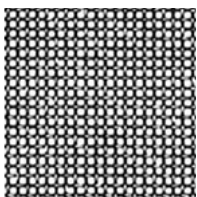


**.1875 DIA.**  
3/16" prox.  
18 Holes Per Sq. In.

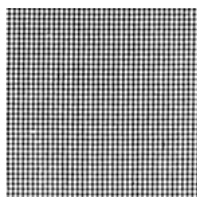


**.25 DIA.**  
1/4" prox.  
12 Holes Per Sq. In.

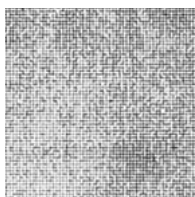
**Woven Metal Wire Mesh**



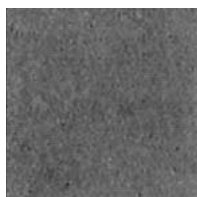
**20 MESH**  
Wire Dia. .014  
Opening .0340



**40 MESH**  
Wire Dia. .010  
Opening .0150



**60 MESH**  
Wire Dia. .0075  
Opening .0092



**80 MESH**  
Wire Dia. .0055  
Opening .0070



**100 MESH**  
Wire Dia. .0045  
Opening .0055

**Mesh/Micron Conversions**

Mesh Size	Microns
20	840
40	420
60	250
80	177
100	149
200	74